

RICOH
imagine. change.

A Wireless-, GPS-, and Barcode-Capable Digital Camera

G800SE



Note: All focal lengths are 35 mm format equivalents.



Wireless
 Connect to computers or smartphones for archiving and storage

WIRELESS
 RICOH G800SE

Shoot, share, and manage images more efficiently.

The water-, dust-, and impact-resistant RICOH G800SE comes with Bluetooth® and wireless LAN for wireless data transmission, and supports a range of options including GPS and barcode units. This single device helps not only to take photographs but also to efficiently share and manage them. The RICOH G800SE is the perfect choice for a wide range of jobs, including medicine, construction, and surveying.



GPS
 Record and store location data for disaster relief



GPS
 RICOH G800SE + GPS unit

Barcodes
 Manage patient image data for medical applications or product data for goods distribution



DATA
 RICOH G800SE + Barcode unit

G800SE

TOUGH

Tough enough for the roughest worksite

IMPACT RESISTANT

Tough body with heightened impact resistance passes the 2.0 m drop test

Although light and compact, the RICOH G800SE features a tempered front lens element and protection at key points, tough enough to withstand the Pentagon MIL Standard 810F 2.0 meter drop test on all 26 surfaces (6 sides, 8 corners, and 12 edges) even when on.



WATERPROOF

IPX 8 water resistance, good to depths of 5 m for up to 2 hours

With Class 8 JIS/IEC water resistance, the RICOH G800SE can take photographs for 2 hours at depths of 5 meters. Use it on wet worksites or in the rain—just rinse the dirt off afterwards.



DUST- AND COLD-RESISTANT

Toughness that shines on harsh jobs

Class 6 JIS/IEC dust resistance keeps out the dust and sand. Able to withstand temperatures as low as -10°C , the RICOH G800SE can be used in cold environments.



New

CHEMICAL-RESISTANT

Sodium hypochlorite, ethanol or liquid chlorine dioxide resistance

Sodium hypochlorite, ethanol or liquid chlorine dioxide can be used in Addition to water wash to keep the camera cleaned and ready for use under any conditions.



Long-lasting battery, good for around 400 shots

The supplied rechargeable battery can be used for about 400 shots* without recharging. A sync mode that turns the monitor off when it is not in use further reduces the drain on the battery.

* Measured according to CIPA guidelines. Actual endurance varies widely with shooting conditions.



Also takes AAA alkaline batteries

In place of the supplied high-capacity rechargeable battery, the RICOH G800SE can also be used with widely-available AAA alkaline batteries, which have enough power for about 40 shots.* Use AAA batteries as backups for long photo sessions or in case the main battery runs out.

* Measured according to CIPA guidelines. Actual endurance varies widely with shooting conditions.



Attach filters

Third-party filters 37 mm in diameter can be used to protect the lens from scratches and condensation. Use polarizing filters to reduce reflections.



Wide, long neck strap



Long enough to be worn across the chest, the strap is broad and rugged. It can also be worn around the neck so that the camera can easily be placed in a breast pocket.

Use without taking off your gloves

Designed for ease of use in gloves, the RICOH G800SE features large switches and a simplified control layout.

Note: Composite image; actual display not shown.



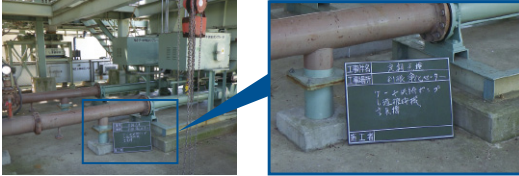
SMART

A high-performance camera for your worksite

New

Back-illuminated CMOS sensor takes bright photos in dim light

Take clear shots of dimly-lit worksites or writing on a blackboard. An effective pixel count of 16 million ensures that details show clearly even after pictures are cropped.



Accessory shoe

To shoot a wider range of subjects, attach a third-party flash unit* to the JIS B7101-compliant accessory shoe.

* Use a unit that supports slave and pre-flash functions. Units without spring mechanisms or safety locks or that require pre-flash support for flash control can not be used. Sync terminals are not supported.



New

High-capacity 8 GB built-in memory

Keep taking photos even without a memory card.

Note: Built-in memory is also used to store system files; the actual capacity available to the user is about 6.5 GB.

New

Button hold options prevent unintended operation

To avoid unintended operation such as accidental menu display or the camera turning on during transport, use the menus to reduce the response speed of the power and menu buttons.

New

Wide-angle 3.0-inch, 920k-dot picture display is easy to read, indoors and out

The large, high-resolution 3.0-inch/920k-dot picture display offers both high contrast and a wide viewing angle for unsurpassed outdoor viewing. Keeping the DISP button pressed for a few seconds selects maximum brightness, helping you deal with quick changes in ambient lighting.

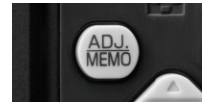
Note: Composite image; actual display not shown.



ADJ. button

The ADJ. button provides quick access to camera settings, including exposure compensation and ISO sensitivity.

Note: The ADJ. button functions as a camera memo button when camera memo settings are enabled.



Blur reduction

The RICOH G800SE features a new type of blur reduction that quickly calculates the difference between two exposures for outstanding performance in dim lighting and at high zoom ratios.

New

Full HD for smooth movie recording

Full HD (1920×1080, 30 fps) recording ensures high-quality, smooth-playing movies. Movie files are recorded in H.264 format.

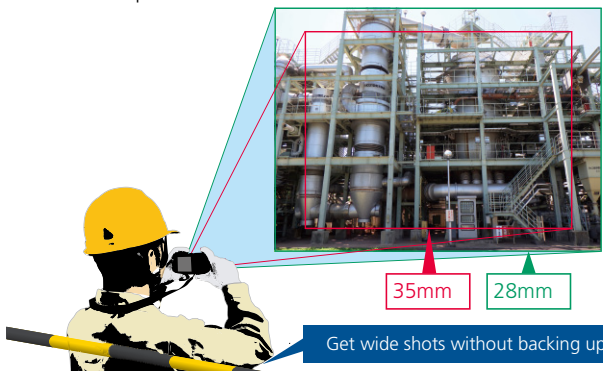
Note: Movies may be up to 4 GB in size or 29 minutes in length.

WIDE & CLOSE

High-performance lens handles a wide range of subjects

Get the shots you want with a non-extending, 28–140 mm lens and 5× optical zoom

Featuring a 28–140 mm lens with 5× optical zoom and a field of view wider than that of a typical 35 mm lens, the RICOH G800SE is perfect for shooting indoors and in other locations where there is little room to back up, yet also takes telephoto shots in its stride.



Optional DW-5 wide conversion lens

Use the DW-5 for wider shots at a focal length equivalent to 22 mm. When attached, it provides JIS Class 7 water resistance and is so slim that the extra length is almost unnoticeable.

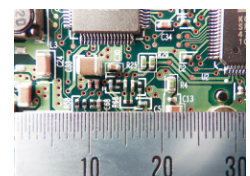


Note: When used with a wide conversion lens, the flash will not illuminate objects at the edges of the frame and parts of any shots taken with the flash will be dark.

Capture weave and texture from as close as 1 cm

The camera's wide-angle macro feature gets you as close as 1 cm* to capture the weave of cloth or small scratches on a screw. Flash photography is available down to distances of 20 cm.

* 15 cm at maximum zoom.



New ■ **High sensitivity for dark locations**

With a range of 10 m (wide angle) to 6.2 m (maximum zoom), the built-in flash ensures that you can photograph indoors and in tunnels, corridors, and other dark locations with confidence. And with extreme ISO sensitivities as high as 25600, you can still get the shot even if you can't use the flash.

■ **FLASH ON (10M) mode**

■ **Extreme Sensitivity: ISO 25600**

(taken with the RICOH G800SE in Flash Off mode)



■ **Act in advance to prevent mistakes on location**

The RICOH G800SE is loaded with features that prevent all kinds of mistakes on location.

New ■ **Simplified settings**

Load camera settings files to ensure that menu settings are always right for the scene. Settings files can also be exported for use in other RICOH G800SE cameras.

■ **Display the date at start up**

The date is important for photos that will be used in record-keeping. The RICOH G800SE displays the date from startup until the shutter release button is pressed, helping you catch errors in the camera clock before they are recorded with your pictures.



Note: Composite image; actual display not shown.

New ■ **Pitch and roll indicators help keep the camera level**

The camera's built-in electronic level with pitch and roll indicators can be used to straighten the camera before shooting, ensuring precision even where footing is poor.



Note: Composite image; actual display not shown.

■ **CALS mode handles all your reporting needs**



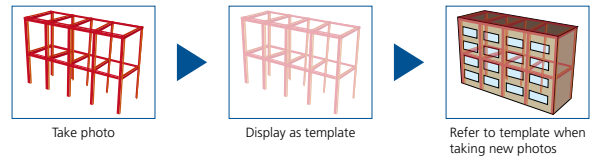
The RICOH G800SE offers convenient modes conforming to a variety of electronic submission guidelines, including those proposed by the Japanese Ministry of Land, Infrastructure, Transport and Tourism.* Choose from image quality and size combinations ranging from 16M 4:3F to VGA 4:3N.

* A pixel count sufficient to legibly render writing on a blackboard (about 1 million).

New ■ **Compare images with "Watermark Options"**

Use existing pictures as a template when composing new photos. Template transparency can be selected from 20, 40, 60, and 80 percent.

One way in which this feature can be used is for before and after shots on construction sites.



New ■ **Upload photos to your smartphone, hassle-free**

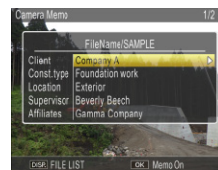
An Eye-Fi card with built-in wireless LAN can be used for hassle-free upload to smartphones or other devices. Choose the destination, select pictures, and choose from 2 resize options for upload.



Note: Select On for Eye-Fi Connection Options.
Note: For more information on Eye-Fi cards, visit the Eye-Fi website at <http://www.eyefi.com/>.

New ■ **Camera memos: image management made easy**

Hard-to-identify images can be clearly labeled with written descriptions in the form of camera memos saved simultaneously with the picture and consisting of up to 20 items, each with descriptions of up to 128 characters. Up to 99 different memos can be added to camera memo lists—which can be stored in the camera's internal memory—and selected as desired. In camera memo Mode 3 you can limit your choice of descriptions according to the item selected.



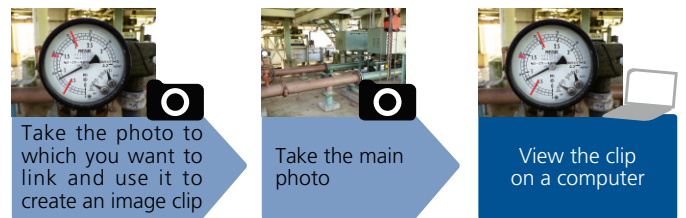
The camera can be used to view drawings and other reference images appended to camera memos.

Note: Composite image; actual display not shown.

New ■ **Clip images onto other images**

For example, you can clip shots of survey data onto worksite photos so that the relationship between the photos and the survey data is clear when the photos are viewed.

Note: Requires the supplied ME1 software.



New ■ **Never miss a shot no matter what the subject**

Choose from 3 burst modes for subjects that are in motion or to photograph moments that pass too quickly to be seen by the naked eye.

■ **Continuous Mode**

The camera takes pictures while the shutter release button is pressed.

■ **S-Cont (Stream Continuous)**

The camera shoots up to 16 or 25 frames over the space of about 2 seconds, starting when the shutter release button is pressed all the way down, and records the shots in a single image.

■ **M-Cont (Memory-Reversal Continuous)**

The camera shoots while the shutter release button is pressed, but records only the last 2 seconds (16 or 25 frames). The frames are recorded as a single image.

New

Built-in Bluetooth® and wireless LAN

The camera features built-in Bluetooth® version 2.1+EDR and IEEE 802.11b/g/n wireless LAN, features that can be used for high-speed wireless connections not only to computers but also to smartphones and other devices. The camera even supports WPS (Wi-Fi Protected Setup™) for easy wireless setup. Bluetooth® and wireless LAN can be used in combination: for example, the former can be used to receive location data from an external GPS device while the latter is being used to upload photographs.



Bluetooth® Transceiver

Feature	Specifications
Data transfer	Bluetooth® standard version 2.1+EDR
Output	Bluetooth® standard Power Class 2
Range ¹	Approximately 10 m (line of sight)
Supported Bluetooth® profiles ²	BIP, OPP, SPP
Operating band	2.4 GHz band (2.400 GHz–2.4835 GHz)

¹ Varies with factors such as signal strength, software, operating system, and the presence or absence of obstacles.
² Specifications set out in the Bluetooth® standard to allow communication between Bluetooth® devices for different purposes.

Wireless LAN Transceiver

Feature	Specifications
Standards	IEEE 802.11b/g/n
Communication protocols	IEEE 802.11g/n: OFDM IEEE 802.11b: DSSS, DQPSK, DBPSK
Data rate (Mbps) ¹	IEEE 802.11n: 65/58.5/52/39/26/19.5/13/6.5 IEEE 802.11g: 54/48/36/24/18/12/9/6 IEEE 802.11b: 11/5.5/2/1
Range ²	Approximately 30 m, varies with location and with operating environment and conditions
Security	WEP (64/128-bit), WPA/WPA2 mixed PSK, WPA/WPA2 mixed EAP format enterprise EAP-TLS, PEAP (MS-CHAPv2)
Operating band	2.4 GHz band (2.412 GHz–2.462 GHz)

¹ Maximum logical data rates according to wireless LAN standards. Actual rates may differ.
² Varies with such factors as signal strength, location, operating conditions, software, operating system, and the presence or absence of obstacles.

New

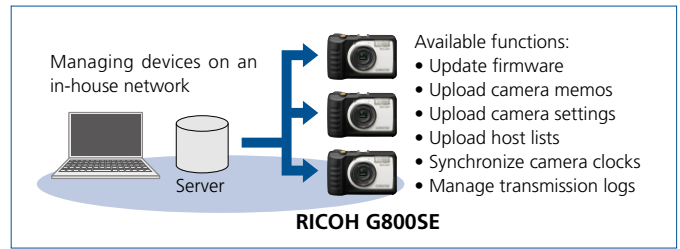
Enterprise Wi-Fi support

The RICOH G800SE supports IEEE 802.1x Wi-Fi authentication, a highly secure method that uses credentials supplied by a RADIUS server.

New

Seamlessly manage cameras on in-house networks

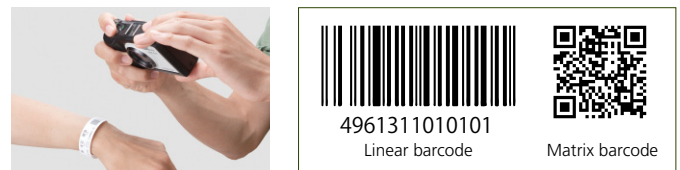
Cameras can be managed in-house or on in-house networks. Update firmware simultaneously on multiple cameras and otherwise reduce administrator workload and improve system integration.



Note: Requires the supplied SR-10 software.

Barcodes help with memo and password entry

The RICOH G800SE reads linear and matrix barcodes. Barcodes can be stored as camera memos that can help with such tasks as managing goods for distribution and preventing patient mix-ups at medical institutions.



New

XML output

Choose an XML export format suited to your system.

New

And you can connect to smartphones too

Configuring a web server on the camera allows the camera to be controlled remotely from, and data downloaded to, smartphones.

Remote camera control

The camera can be controlled remotely using a smartphone web browser. Take photographs remotely at any conceivable angle.

Remote image browsing

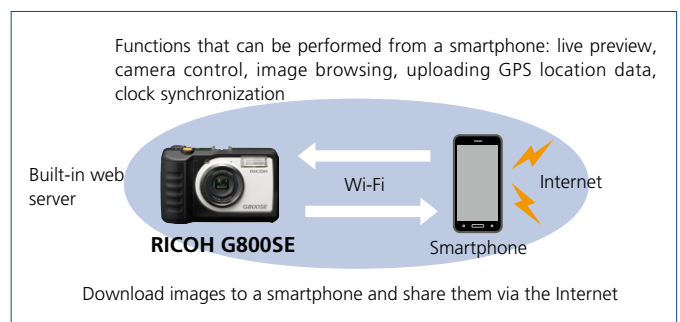
The images on the camera can be viewed using a smartphone. Use the smartphone for such tasks as storing or e-mailing images.

Embed GPS data

GPS location data from a smartphone can be embedded in pictures taken with the camera.

Set the camera clock from a smartphone

Synchronize the camera clock with your smartphone to keep the camera on the correct time.



Note: See the RICOH website for supported operating systems.

ENHANCEABLE

Two options make the camera even more versatile

Option 1: GP-1 GPS unit with an electronic compass

Connect the compact GP-1 GPS unit to embed location data in photographs and movies. Thanks to the electronic compass, the embedded data also include the compass heading. With the GP-1 attached, the camera offers IP64 dust- and water-resistance and can withstand drops of up to 1.2 m.

GPS accuracy: Approximately 5 m 2DRMS under open skies (clear skies with no obstacles above an elevation of 30°).
Electronic compass accuracy: ±6° deviation from magnetic north



Option 2: BR-1 laser barcode reader unit

Connect the BR-1 barcode unit to read linear barcodes. This laser barcode reader scans codes faster than the camera lens and can be used even in the dark. With the BR-1 attached, the camera offers IP64 dust- and water-resistance and can withstand drops of up to 1.5 m.

Note: The BR-1 is a Class 1 Laser Product and is for professional use only. Ownership is non-transferable. For more information, contact the RICOH sales department.



Supported barcodes (linear barcodes only)

- Chinese 2 of 5 • Codabar
- Code 11
- Code 32 (Italian Pharma Code)
- Code 39 • Code 39 Full ASCII
- Code 93 • Code 128
- EAN-8 • EAN-13
- UCC/EAN128 • MSI
- Interleaved 2 of 5
- Discrete 2 of 5 • UPC-A
- UPC-E • JAN/UPC/EAN
- JAN/UPC/EAN with Supplementals

SECURE

Create images that can be trusted; prevent leaks

New

Store data (including movies) on tamper-proof write-once memory cards

The RICOH G800SE supports Sandisk SD WORM and Toshiba Write Once memory cards. Data stored on these cards can not be deleted or modified, making them ideal choice to replace film as original documentation in applications such as policing, fire-fighting, and defence, where the authenticity of image data may be called into question.

Note: SanDisk and Toshiba respectively provide SD WORM and Write Once memory cards to corporate entities through their distributors.



New

Password protection for memory cards

Two types of SD memory cards can be password protected: SDHC and SDXC. Password-protecting memory cards prevents images falling into the wrong hands should the card be lost or stolen.

Note: Do not forget your password. Password-protection can not be removed by support personnel. Before use, check that your memory card supports password-protection.

Edit detection ensures image authenticity

The RICOH G800SE is equipped with extremely accurate edit detection that makes digital images submitted as evidence more likely to be trusted. RSA encryption enables edit detection for entire images, which can be imported to the supplied EC1 software for a highly accurate determination of whether or not the image has been tampered with.

Note: Requires the supplied EC1 software.



Date/time of recording:
July 7, 2014/10:40:00

A digital signature is embedded in an image taken in edit detection mode.



Date/time of recording:
August 7, 2014/10:40:00

Changes to the image, such as retouching or changing the date of recording, create inconsistencies in the digital signature.



Note: Composite image; actual display not shown.

The supplied software inspects the signature for consistency to determine whether or not the image has been modified.

Password protection restricts access to a variety of camera functions

Password-protect the entire camera or internal memory or require a password only for USB access or to modify camera settings. Access can be granted by scanning a password barcode or entering the password using the camera's onscreen keyboard.

New

Create up to 2 passwords

Create separate user and administrator passwords. The administrator can restrict access to functions used on-site, for example to prevent unintended changes to camera settings when the camera is used in the workplace.

	Administrator	User
Camera access	●	●
Menu access	●	●
Viewing internal memory	●	●
USB connection	●	●
SD-WO only	●	●
Web access	●	●

Note: Administrator password takes priority.

