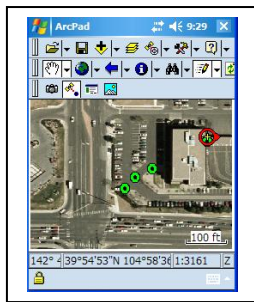


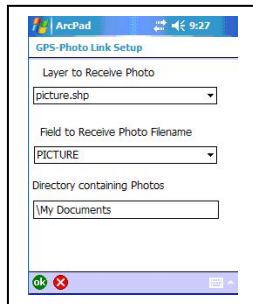
GPS-Photo Link ArcPad Edition Quick Start Guide

Introduction

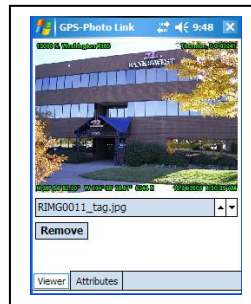
GPS-Photo Link ArcPad edition is a tool to easily connect photos to ArcPad data in the field. Photos can be taken by a variety of cameras, as long as the photos can be put in a directory on the PDA. You can use PDA's with built-in cameras, or cameras equipped with Bluetooth or Wifi to send the images as they are taken to the PDA. The Ricoh 500SE has both Bluetooth and WiFi and works very well with this application. The Trimble TrimPix with Nikon cameras can also be used. GPS-Photo Link ArcPad edition runs as an extension in ArcPad, seen in the first graphic as the bottom toolbar with 4 icons.



Toolbar



Setup



Viewer

Instructions

You can use any shapefile, just add a field for the photo filename, such as PICTURE. Load the shapefile and make it editable. Then click the Setup icon (3rd icon in the toolbar), and make sure you shape file is selected, and the field to receive the Photo Filename is selected. The last option is the directory on the PDA where the photos will be stored when the camera takes the picture. Some Bluetooth drivers only send photos to \My Documents, etc.

There are two ways to attach photos to a record. The first option lets you add photos to an already existing point. Push the 1st Icon in the toolbar (Camera icon), then select the point. Any pictures that are then taken get attached to that point. You can attach one or many photos to a single point. The second option is to have a point created automatically at the current GPS position when you take a picture. Push the 2nd icon (GPS to Point icon), then the next picture taken will cause a new point to be created with the photo attached to that point. For either option, the photo is moved from the photo directory to the same directory as the shape file.

Once a photo has been linked to a point, you can use the last Icon (Picture Viewer), to view the photos taken at that point. Use the up/down arrows to cycle through the photos.