

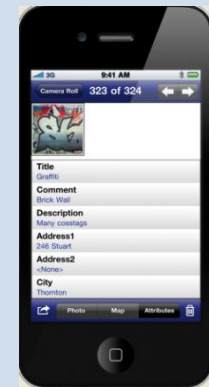
GeoJot+

From field data collection ... to final reports



GeoSpatial Experts, Inc.

- ❑ Founded in 2001
- ❑ World leader in photo mapping software for business.
- ❑ GPS-Photo Link, introduced in 2001, has provided the most advanced photo mapping, attribute mapping, and photo-based data editing capabilities available.
- ❑ GeoJot, introduced in 2011, pioneered the use of smartphones and tablets for photo-based field data collection & cloud transfer.
- ❑ The GeoJot+ field data collection solution was introduced in November 2012. There have already been over 2500 trial version downloads.



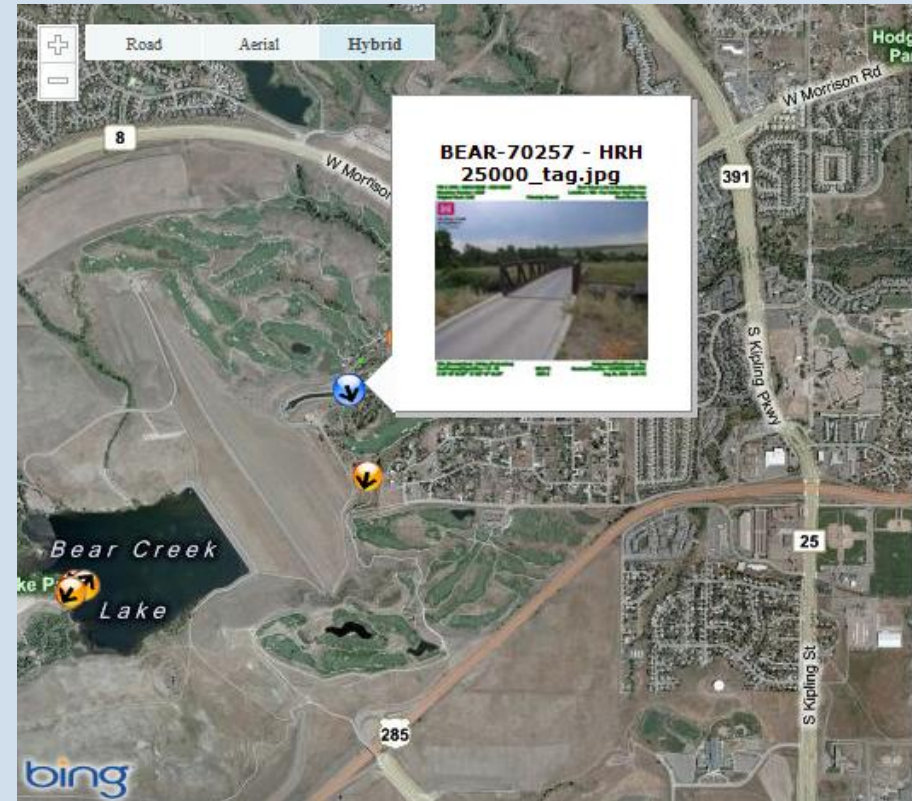
GeoSpatial Experts' Customers

United States Army Corps of Engineers • AECOM • United States Army • **Golder Associates** • United States Marine Corp • Raytheon • United States Air Force • United States Navy • National Park Service • Georgia Department of Transportation • Texas Department of Transportation • Minnesota Department of Transportation • Florida Department of Transportation • State of Alaska • State of Louisiana • State of Nevada • State of Rhode Island • State of Tennessee • New York State Department of Environmental Conservation Atlanta Regional Commission • Rhode Island Natural History Survey • Big Cypress National Preserve • **FEMA** • Bureau of Land Management • Smithsonian Institution • American Museum of Natural History • Australia Department of Defense • Canadian Armed Forces • Department of Defense • Parks Canada • Rocky Mountain National Park • Dinosaur National Monument • The Nature Conservancy • Department of State • **United States Coast Guard** • USDA • Federal Highway Administration • Glacier National Park • USGS • United States Fish and Wildlife Service • United States Forest Service • Australia Department of Environment and Heritage • Government of the Northwest Territories • British Embassy • Ontario Ministry of Natural Resources • State of Qatar • Tasmania Department of Tourism • Geoscience Australia • County of Orange, CA • Jefferson County, OH • City of Bryan, TX • City of College Station, TX • City of Charlotte, NC • City of Long Beach, CA • City and County of San Francisco, CA • City of Kissimmee, FL • Lake County Stormwater • Collier County, FL • Miami-Dade County, FL • City of Tucson, AZ • Quinault Indian Nation • Florida Fish and Wildlife Conservation Commission • Los Angeles County Fire Department • Manitoba Hydro • Nueces River Authority • Honolulu Board of Water Supply • Missoula County Weed District • Rhode Island Natural History Survey • Office of the Chief Medical Examiner, New York City • Calhoun County Emergency Management Association • Washington DC Department of Health • Appalachian National Scenic Trail • Cape Hatteras National Seashore • Ducks Unlimited • National Marine Fishery Service • **Northrop Grumman** • AirPhoto USA • Ayres Associates • Bechtel • Brown and Caldwell • Ecological Resource Consultants • EMA, Inc. • EZ Storage • Fisher Associates • FMSM Engineers, Inc. • General Dynamics AIS • HNTB Corporation • Inwood Consulting Engineers • Johnson Engineering • LD Bradley Land Surveyors • Duke Energy • Louis Berger Group • Mesa Associates • NGA • Northstart Geomatics • Osmose Utility Services • Pacific International Engineering • Parsons Brinkerhoff • PBS & J • PixEarth • Reiss Environmental • Smart Map Imaging • Respec • TechTrans • The Titan Corporation • Transpotek Engineers • Vantage Point Photography • Walt Disney Imagineering • XPM Technologies • Carter & Burgess • Golder Associates – Jakarta • Earthquake Engineering Research Institute • **Oil Spill Response, Ltd.** • Bishop Museum • Pole Maintenance Company • Spokane Appraisal Services, Inc. • Auburn University • Tufts University • University of Louisiana • Community College of Baltimore • University of New Orleans • East Carolina University • University of New Mexico • Oregon State University • University of Alaska • College of Southern Idaho • St. Michaels University School • Mount Union College • University of Arkansas • University of New Hampshire • University of Rhode Island • University of the South • University of Toledo • University of Wisconsin • Wayne State University • University of Montreal • University of Copenhagen • University of Guelph • University of British Columbia • Pontificia Universidad Catolica Del Peru • Massachusetts Institute of Technology



Mapped photos solve business problems



- ❑ Visualize your data
- ❑ Document condition
- ❑ Provide actionable information
- ❑ Provide competitive advantage
- ❑ Meet project deadlines
- ❑ Reduce project expenses
- ❑ Increase revenue & speed cash flow



Mapped photos solve business problems



- ❑ Compliance documentation
- ❑ Site assessments
- ❑ Disaster response
- ❑ Proof of performance
- ❑ Asset inventory,

Attributes		BEAR-59023 - HRH 25000_tag.jpg	
Latitude	N 39° 39' 00"		
Longitude	W 105° 08' 46"		
Date Stamp	8/31/2009		
Title	XP Bear Creek Lake & Recreation Area		
PID & HRH	BEAR-59023 - HRH 25000		
Location	112 - Pelican Point		
HRH Type	Privately Owned		
Structure Number	5397		
Title (Description)	Fishing Pier		
Original Cost	0.00		
Outgranted/Outleased	Yes		
Contract Number	DACW45-1-82-6091		

Mapped photos AND data

Capture extensive data for each photo



Attribute

Attribute Value

Sign Type	Loading
Condition	Faded
Action Required	Replace
Retro Reflectivity	20
Caps	NA
Pole Material	Steel
Position	Roadside
Jurisdiction	Parks
Next Maintenance	Immediate

GeoJot+

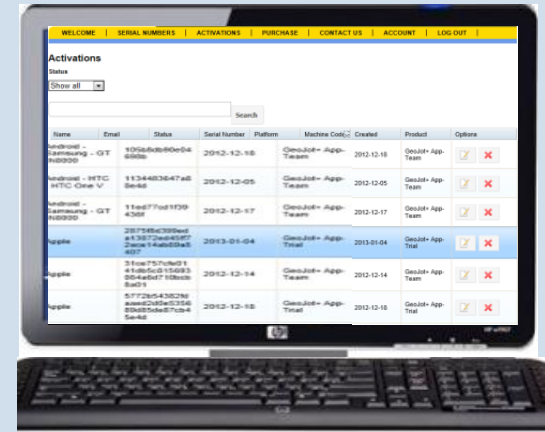
From field data collection to final reports



2. Cloud



3. GeoJot+ Core



4. GeoJot+ Administrator's Dashboard

1. GeoJot+ App

1. Android and Apple smartphones & tablets capture field data with geotagged photos
2. Automatically transfer photos & data to the office via the cloud
3. Process data back in the office: creating reports, maps and database input
4. Manage teams: add, revoke, and transfer app licenses between Apple and Android devices

What is GeoJot+



Team focused....

Simple app interface for minimal training



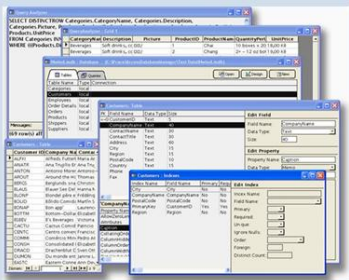
- Create lists in the office
- Pick lists ensure accurate and consistent data
- Email lists to field teams
- Automatically transfer data via the cloud back to the office



What is GeoJot+

A data management tool ...

- Enforce consistency and quality standards
- Create watermarked photos
- Produce customizable reports - Word, .pdf, html
- Generate maps
 - Esri Shapefiles, Geodatabases (including BLOB)
 - Run inside ArcGIS
 - Create Google Earth files
- Prepare data for input into database - .csv and MS Access files



What is GeoJot+



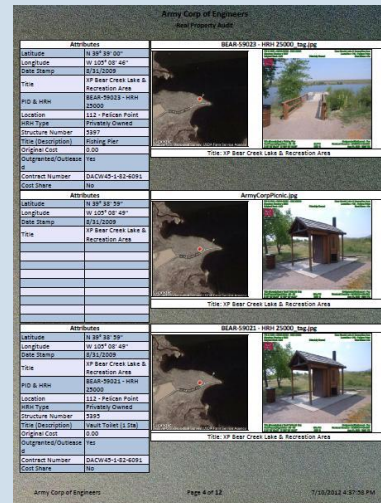
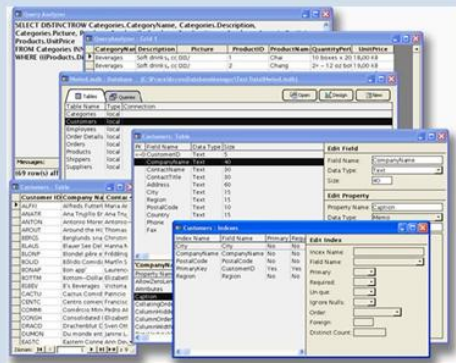
A GPS tool 📍

- Increase GPS accuracy on iPhones and iPads
- Display GPS location & accuracy on screen
- GPS accuracy warning
- GPS lock functionality
- Integrate laser rangefinders on Androids

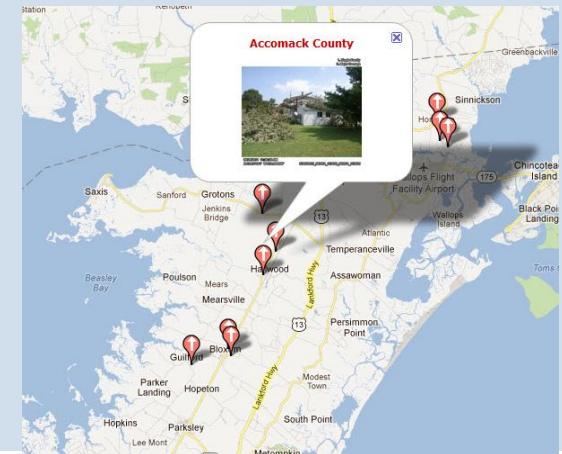


GeoJot+ : Output for Every Need

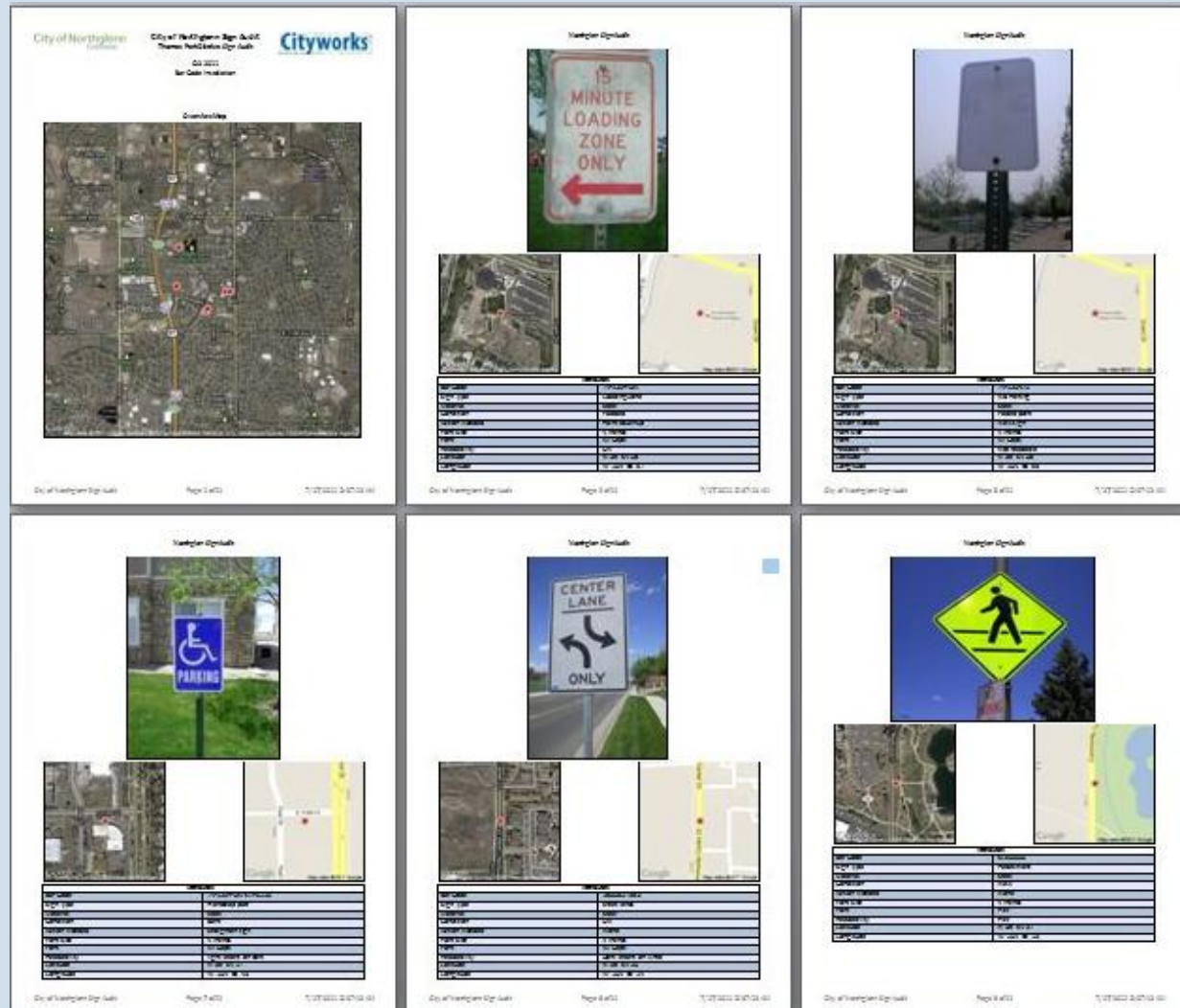
- Client Reports
- Watermarked Photos
- Database input
- Web Pages



- Google Earth files
- ArcGIS Shape Files & Geodatabases



- ▣ Reports
- ▣ Photos
- ▣ Data
- ▣ Maps



End-User Output: Condensed Report



Army Corp of Engineers
Real Property Audit

BEAR-59023 - HRH 25000 .tag.jpg

Attributes	
Latitude	N 39° 39' 00"
Longitude	W 105° 08' 46"
Date Stamp	8/31/2009
Title	XP Bear Creek Lake & Recreation Area
PID & HRH	BEAR-59023 - HRH 25000
Location	112 - Pelican Point
HRH Type	Privately Owned
Structure Number	3397
Title (Description)	Fishing Pier
Original Cost	0.00
Outgranted/Outleased	Yes
Contract Number	DACW45-1-82-6091
Cost Share	No

Title: XP Bear Creek Lake & Recreation Area

BEAR-59021 - HRH 25000 .tag.jpg

Attributes	
Latitude	N 39° 38' 59"
Longitude	W 105° 08' 49"
Date Stamp	8/31/2009
Title	XP Bear Creek Lake & Recreation Area
PID & HRH	BEAR-59021 - HRH 25000
Location	112 - Pelican Point
HRH Type	Privately Owned
Structure Number	3395
Title (Description)	Vault Toilet (1 St)
Original Cost	0.00
Outgranted/Outleased	Yes
Contract Number	DACW45-1-82-6091
Cost Share	No

Title: XP Bear Creek Lake & Recreation Area

Army Corp of Engineers

Page 4 of 12

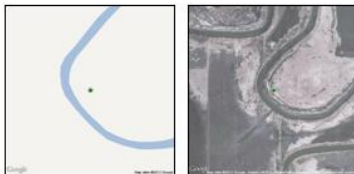
7/10/2012 4:37:08 PM

End-User Output: Contact Sheets

Reports with photos, data, & maps

BROWN COUNTY

2009 Flood in Brown County
South Dakota
Damage Assessment and
Emergency Team Deployment
FEMA disaster application



Protective Measures



Date Stamp: 9/6/2011

Protective measures



Date Stamp: 9/6/2011

Water Control



Date Stamp: 9/6/2011

BROWN COUNTY

2009 Flood in Brown County
South Dakota
Damage Assessment and
Emergency Team Deployment
FEMA disaster application



Debris Removal



Date Stamp: 4/17/2006

Water Control



Date Stamp: 3/24/2009

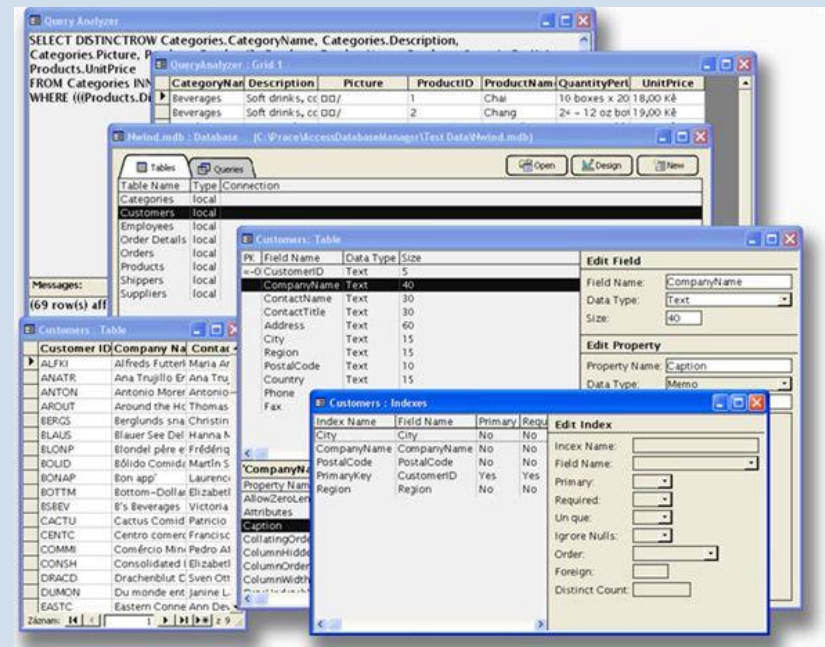
Roads Signs Bridges



Date Stamp: 3/27/2009

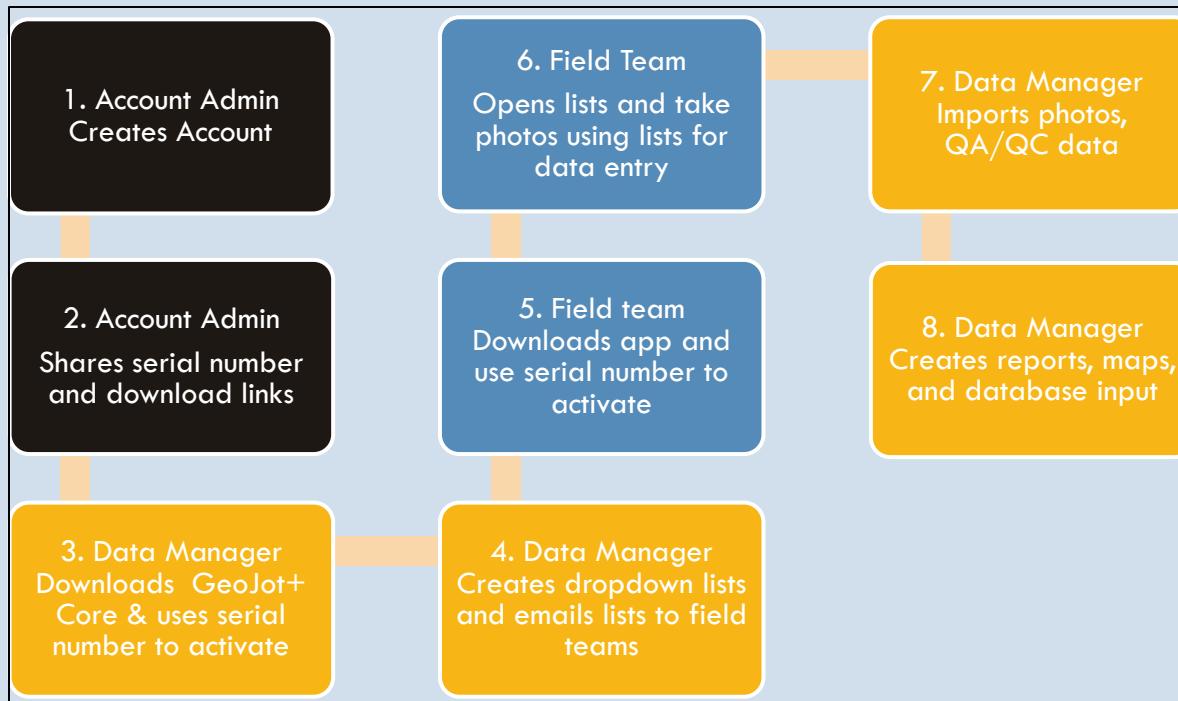
End user Output: Database & Systems Integration

- Database-ready data for:
Oracle, SQL Server, IBM DB2,
MS Access.
- Photo-data ready for
enterprise systems:
SAP, asset management,
ESRI Enterprise GeoDatabase,
IBM Maximo



GeoJot 360™ Implementation Blueprint

Workflow design, list authoring, report & template design, training



Contact Information

John Clark
Director, Business Development
John.Clark@GeoSpatialExperts.com
office: 303 255.2908
cell: 720 431.8550

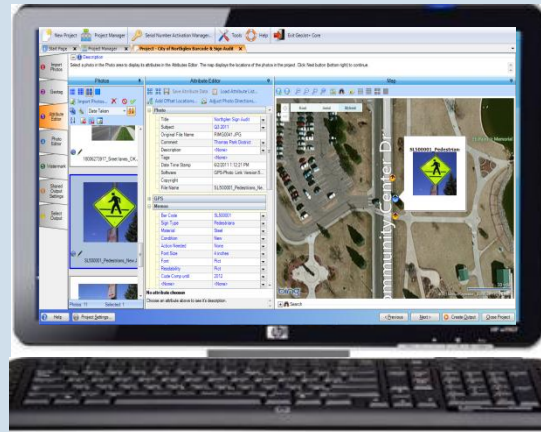


GeoJot+

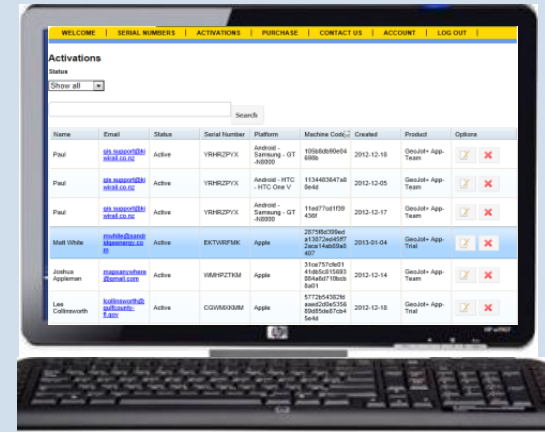
From field data collection to final reports



2. Cloud



3. GeoJot+ Core



4. GeoJot+ Administrator's Dashboard

1. GeoJot+ App

1. Android and Apple smartphones & tablets capture field data with geotagged photos
2. Automatically transfer photos & data to the office via the cloud
3. Process data back in the office: creating reports, maps and database input
4. Manage teams: add, revoke, and transfer app licenses between Apple and Android devices