

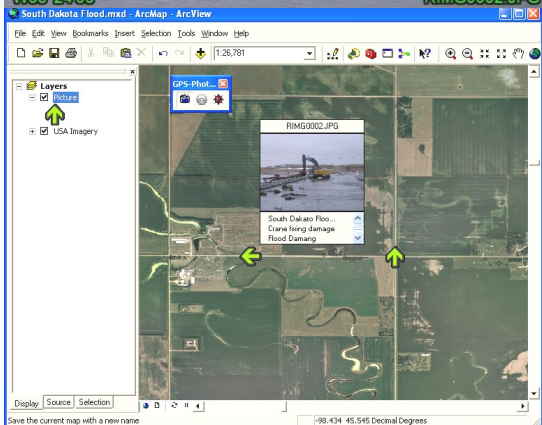
# GPS-Photo link

Quick Start Guide- v.5.1



## Use this booklet to:

- Quickly activate your software
- Transfer a license
- Briefly overview basic steps to start using the new GPS-Photo Link



software that maps your photos.

# Welcome

Thank you for purchasing GPS-Photo Link. You will find that it reduces the time it takes to do your photo reporting tasks.

Help is available! In addition to the quick start guide, there are help files on the GPS-Photo Link CD that are part of the regular installation. The latest help files are always available online at [www.GeoSpatialExperts.com/support/](http://www.GeoSpatialExperts.com/support/). There are training videos that can be accessed through the help menu in the software and there is instructional text across the top of every screen during photo processing. You may also ask questions on our user forum. Find the link to our forum while using the software by Clicking the Help button at the top and choosing Contact Us, Forum. You can also see the forum through our website at <http://gseusers.ning.com/>

Welcome .....	2
Installation .....	3
Serial Number Activation and Registration .....	3
Floating Licenses.....	6
Transferring the License (to a new computer).....	7
Quick Start Guides	
The 5-Step Start for Users of 4.x and earlier versions .....	8
The 6-Step Start for ArcGIS Users .....	9
The 6-Step Start for New Users.....	10

## **Installation**

To install your software, download it from the GSE website and Click Run when prompted. If you have a CD, insert it into your CD-ROM drive. The installation starts automatically.

You may be asked to download some supporting software during the installation process. This means that some other software that GPS-Photo Link needs to work were not found, and we want to make sure all of these pieces are in place before you start up GPS-Photo Link.

Upon install, the software is immediately available in trial mode. In trial mode, the software will run for 15 unique days with limited features such as processing only 10 photos and adding watermarks to each photo.

## **Serial Number Activation and Registration**

To activate your software you will need the 31 digit serial number provided to you upon purchase. Look in the DVD case or on the receipt of your purchase to find the number.

Click the Serial Number Activation Manager button at the top of the screen. Click "Activate Now...". The software will check to see if you have an internet connection. If you do it will automatically prompt you to enter your serial number. If you received the serial number electronically you can copy it from the source and paste it across all the fields using the Paste Serial Number button.

Once the serial number is entered press the Activate button. Next you will be asked to provide contact information. This information will be used by GeoSpatial Experts to identify you

as the user for technical support and to update you on any significant changes to the software. It will never be sold or shared with other organizations. Please provide accurate information and please update the information if the primary user, department, or company changes so that we can update our records.

Click the Activate button to activate the software. The Serial Number Activation Manager should now reflect your current license status and when your maintenance and support agreement will expire.

Once the software is activated it becomes "checked out" on the GeoSpatial Experts server.

Each license of GPS-Photo Link runs on one computer at a time. The license can be transferred between computers using the Transfer procedure outlined later in this document. Before using this license (serial number) on another computer you must "Deactivate" the license by clicking the Deactivate Now button. This will "check in" the license on the server making your serial number available to be used on another computer. See Transferring the License instructions for more information.

The Refresh Information button allows your software to check our server to update the license status. Use this after purchasing or extending your maintenance agreement to immediately renew your license.

The Copy Information button allows you to copy the license and version information onto your clipboard so that you can save it for your records or email it. The Email Information button allows you to quickly email information to GeoSpatial Experts. Use this only if you are having trouble activating your software. The Email Information button works with Microsoft

Outlook. Use the Copy Information button with any other email application.

### *Floating License*

Floating licenses are designed to facilitate easy sharing of a single license across multiple users. These licenses are purchased separately from GeoSpatial Experts. You can convert current stand-alone licenses into a floating license. Contact GeoSpatial Experts for more information.

Floating licenses can automatically activate and deactivate each time you launch or close GPS-Photo Link. You can also keep it activated (checked out) for a specific period of time by clicking the Keep Checked Out button and entering the number of days you want. After that time elapses, your license code will be automatically deactivated (checked in) making it available for someone else to use. A single floating license can be used by one person at a time.

### *Non-Internet Activation*

**If you do not have an internet connection the software will launch the Non-Internet Activation**

If you are unable to use the internet - you may email [help@geospatialexperts.com](mailto:help@geospatialexperts.com) or call to unlock your license manually: (303) 255-2908 during office hours (8:30am–5:00pm Mountain Time).

Here are the specific steps:

1. Open Serial Number Activation Manager: The program should sense that you do not have an internet connection and bring up the Non-Internet Activation screen.
2. Use this screen to create an email using either the Copy Activation Request Code button or the Email Activation Request Code button. Use the Copy Activation Request Code button to paste the contents into an email program

other than Microsoft Outlook. Use the Email Activation Request Code button to create an email using Microsoft Outlook. Once the email is created, please add the 31 digit serial number you received upon purchase along with the rest of the information requested in the generated form.

3. Send the email to [help@GeoSpatialExperts.com](mailto:help@GeoSpatialExperts.com) or call us at 303-255-2908 with the information.
4. GeoSpatial Experts will generate an Activation Authorization Code and return it to you via email or over the phone. This number is very long, so email is preferable.
5. Copy and use the Paste button (or manually type in) to enter this new Activation Authorization Code into the box in Step Two.
6. Click the Activate button to activate the software. Your license status will appear in the text box at the bottom of the Activation screen. Click the Close button, now the Serial Number Activation Manager should now reflect your current license status and when your maintenance and support agreement will expire.

Each license of GPS-Photo Link runs on one computer at a time. The license can be transferred between computers using the Transfer procedure outlined in this document. Before using this license (serial number) on another computer you must "Deactivate" the license by clicking the Deactivate button. This will "check in" the license on the server making your serial number available to be used on another computer. See Transferring the License instructions for more information.

## Transferring the License

You can easily transfer a GPS-Photo Link license from one computer to another via the Internet.

Click *Help* on the main tool bar then, *Activation Manager*.

1. On the old computer, use the *Copy or Email Information button* to copy the Serial Number listed. Email that information to the new computer or user.
2. On the old computer, click the *Deactivate button* (using either the *Internet button* if you have Internet access or the *Non Internet button* if you do not).
  - If you use the Internet option the *Deactivate button* will immediately check the license back into our server making it available to another computer. Your original computer will no longer be able to use GPS-Photo Link.
  - If you use the *Non Internet option*, the *Deactivate button* will also immediately disable your license. However, you must send an email to notify us of the deactivation so that we can make that license available to another user. If you do not have email access you may call us with the information.
3. On the new computer follow the Activation instructions . Use the *Paste* function to paste in the serial number you copied from the first computer or type it in.

## Quick Start Guides

There are three Quick Start Guides. One for long time GPS-Photo Link users, one for ArcGIS users, and one for new users . The guide for long time users emphasizes what is different from previous versions while the new user guide describes the critical steps you need to understand before using GPS-Photo Link. At any time in the program you can click on the help button to get help with that screen.

## The 5-Step Start Users of 4.x and earlier versions

While it looks very different, the new GPS-Photo Link uses the same steps as the old Wizard style user interface.

1. **START PAGE:** GPS-Photo Link now begins with a Start page that looks like a webpage. If you have an internet connection this page will be updated with the latest information from GeoSpatial Experts including important information about any updates to or issues with the software.
2. **PROCESS PHOTOS:** To begin processing photos, click on the *New Project button* in the toolbar. You will be asked to name your project. Next a screen with tabs along the side will appear. These tabs are similar to the screens of the previous versions of GPS-Photo Link. Follow the instructions near the top of each screen and work your way down the tabs. If you have trouble, click the help button. As before, you will begin by importing your photos.
3. **EDITING & WATERMARKS:** The new GPS-Photo Link allows more flexibility in editing attribute data and incorporating these into the watermarked photos. There is also new photo editing functionality. Use the *Attribute Editing screen* to edit one or more photos. You can now bulk edit any field for as many photos as you select. Use the *Photo Edit screen* to edit the actual photograph including cropping, contrast, drawing and more. Any attributes may now be used as watermarks and there are many more spaces for watermarks to appear on your photos.
4. **VIEW PROJECTS:** The *Project Manager tab* at the top of the program allows you to view all the output from all your projects on one simple screen. Click on the + box to expand the view. By double clicking on the project you can reprocess the photos.
5. **VIEW PROJECTS FROM OLDER VERSIONS OF GPS-PHOTO LINK:** The new GPS-Photo Link uses a completely different programming language and file system making it



impossible to simply import output from previous projects into the *Project Manager*. You can still find previous output as you have in the past. You can also use the new version to reprocess old photos so that they are all stored together.

## The 6-Step Start for ArcGIS Users (only GIS PRO)

Look for *GPS-Photo Link toolbar* in ArcGIS. The far right button launches GPS-Photo Link in a separate window. This allows you to use the full functionality of GPS-Photo Link including the attribute editor, photo editor and watermarking. For the fastest, simplest results you only need to complete



four steps:

1. CREATE A PROJECT: *Click New Project icon* and give your project a name.
2. IMPORT PHOTOS: Browse to the file containing the photos.
3. GEOTAG PHOTOS: If photos do not already contain GPS coordinates use the Geotag Wizard.
4. SELECT OUTPUT: Indicate whether you want to create ESRI Shape Files, File, Personal or Enterprise Geodatabases. Make sure to indicate specifics relating to each output type including whether this output will be created as a new geodatabase or inserted into an existing geodatabase.
5. CLICK CREATE OUTPUT BUTTON: GPS-Photo Link will process photos and display them in ArcGIS automatically.
6. USE VIEW BUTTON: Use the *view button* on the left of the toolbar to activate the hover feature and use the *Set-up button* in order to determine what information is displayed in the hover pop-up window.

## The 6-Step Start (for New Users)

1. **START PAGE:** GPS-Photo Link begins on a Start page that looks like a webpage. If you have an internet connection this page will update with the latest information from GeoSpatial Experts including important information about any updates or issues with the software.
2. **TO START A PROJECT:** To begin processing photos, click the *New Project button* at the top of the screen. Once you give your project a name you will go to a screen that shows all the steps for processing your photos. These steps are shown as tabs on the left side of the page. There is instructional text at the top of each screen. Once you add your photos and make sure they are geotagged, you can simply use the *Next button* and GPS-Photo Link will create output using default settings. Customize your reports by making changes on various tabs. If you have trouble, click the help button.
3. **IMPORT PHOTOS:** Browse to the place where your photos are stored and select all or some of the photos in the folder. Icons next to the photos indicate whether GPS coordinates are already associated with the photo. If your photos already have embedded GPS coordinates, you may skip the geotagging step below.
4. **GEOTAG:** The Geotag wizard walks you through steps to link your photos with the GPS coordinates you recorded on a separate GPS device. Follow the steps to link the data. Afterward, the number of geotagged photos will be displayed.
5. **ATTRIBUTE EDITOR, PHOTO EDITOR, WATERMARK, AND SHARED OUTPUT SETTINGS TABS:** Default settings allow you to skip these steps, however you may want to edit attribute data including photo location using the *attribute editor tab*. You can edit the photo itself including cropping or writing on the photos using the *Photo Editor tab*. The *Watermark and Shared Output Settings tabs* allow you to format how output will look in your final reports.

6. **SELECT OUTPUT::** Indicate which kinds of output you want GPS-Photo Link to create. Choose from printable reports (e.g. PDF, Word) or data files (e.g. ShapeFiles, GoogleEarth). Adjust settings specific to those outputs and click FINISH. After processing, your output can be viewed by selecting the *Project Manager tab* at the top of the screen.

# GPS-Photo link



p | 303.255.2908      f | 303.362.7129  
e | [help@GeoSpatialExperts.com](mailto:help@GeoSpatialExperts.com)

[www.GeoSpatialExperts.com](http://www.GeoSpatialExperts.com)