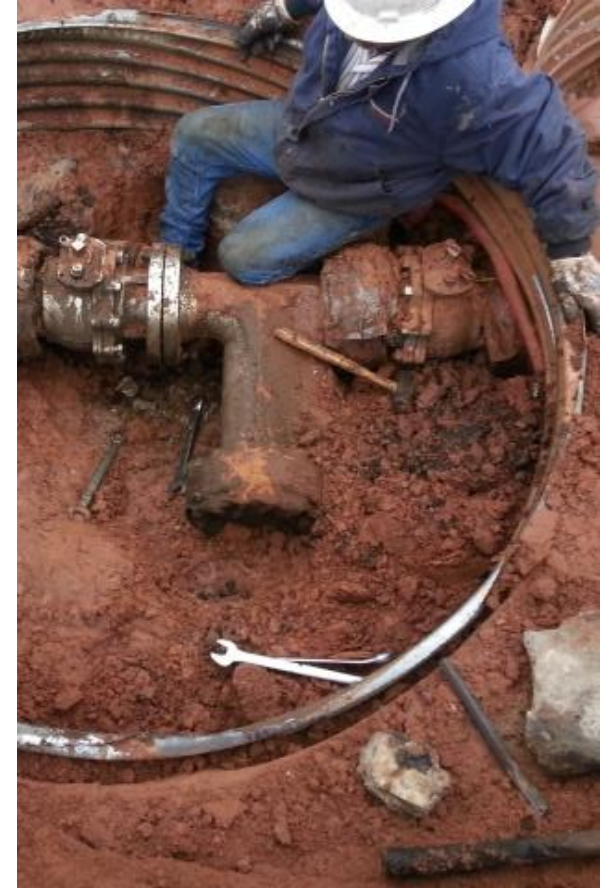




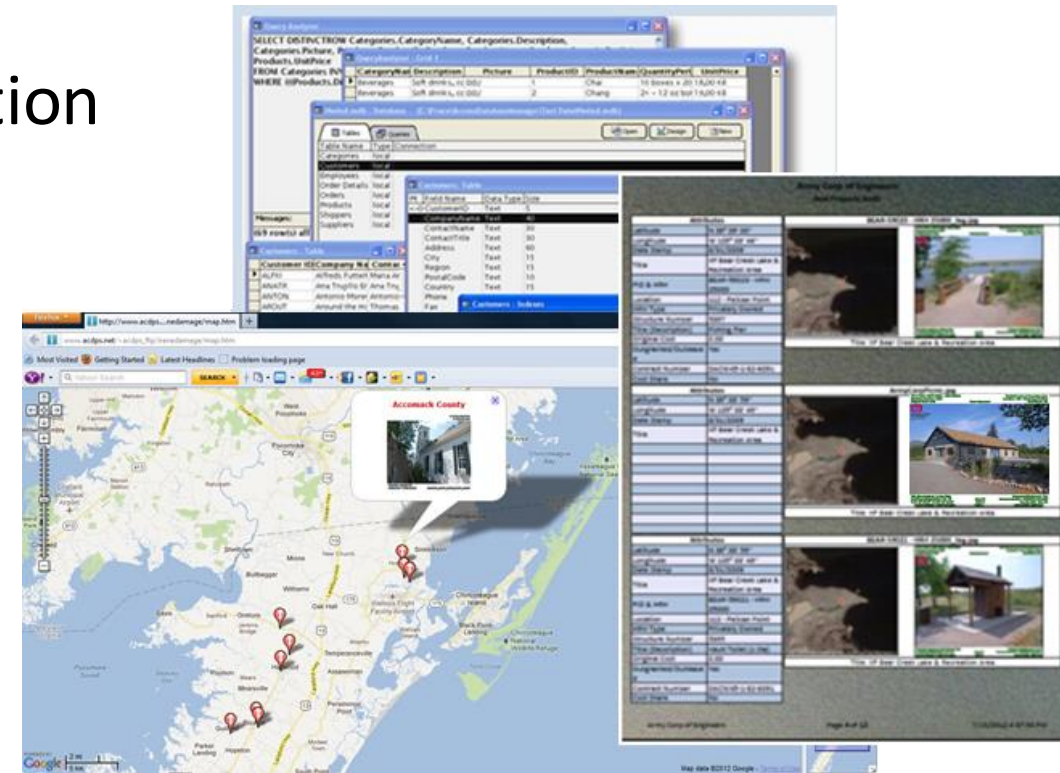
GeoJot+

For pipeline data collection

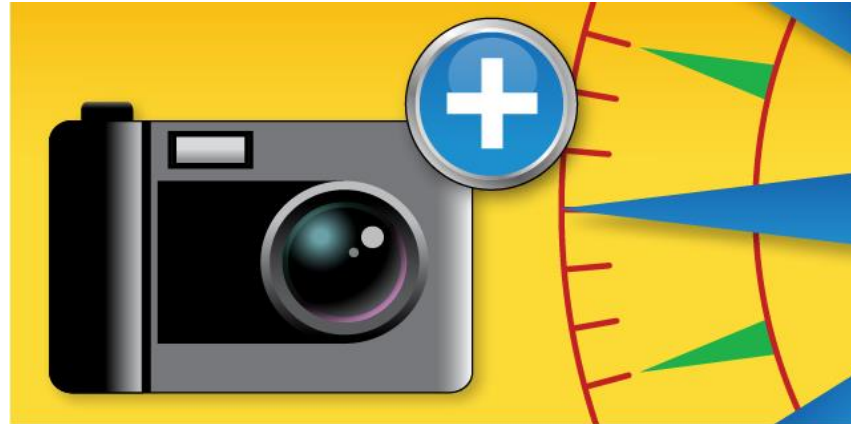


GeoJot+

From field data collection
to final reports



GeoJot+



GeoSpatial Experts..... The leader since 2001



ExxonMobil



GDOT
Georgia Department of Transportation



AECOM



NORTHROP GRUMMAN



Raytheon



FEMA



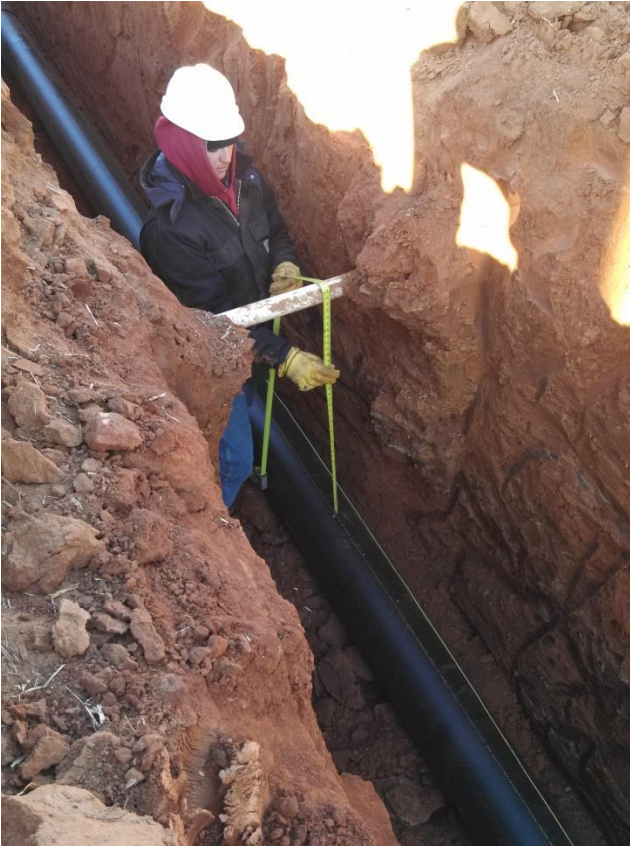
The Nature Conservancy



Worldwide resellers



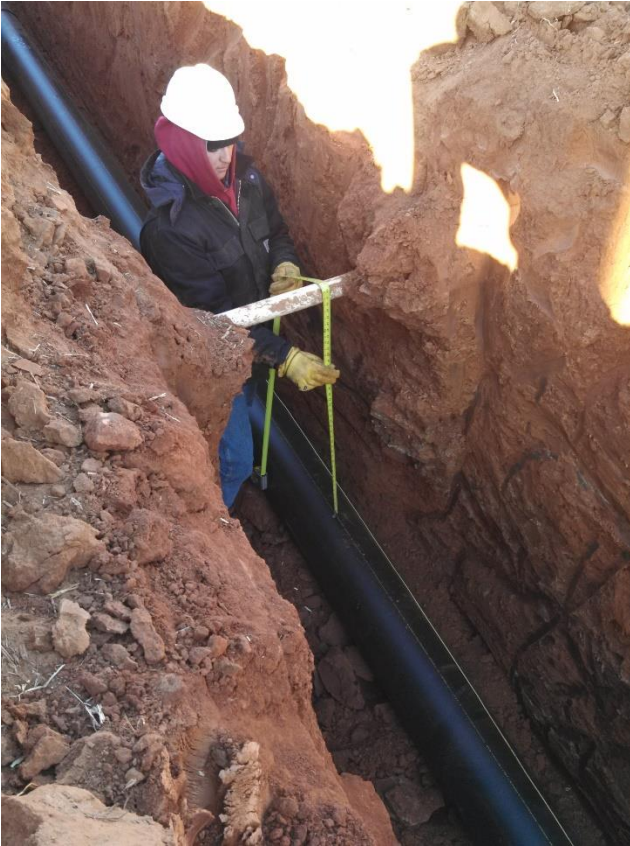
Pipeline data collection with GeoJot+



Get the required compliance data during installation fast

- Great for contractors and employees
- Collect data points in 3 minutes versus 20 with manual method
- Eliminate manual data entry errors
- No more going back to sites to collect missing or bad data
- Keep inspectors onsite 3-5 more hours a week with cloud data transfer
- Save 6-10 hours per week processing data at headquarters

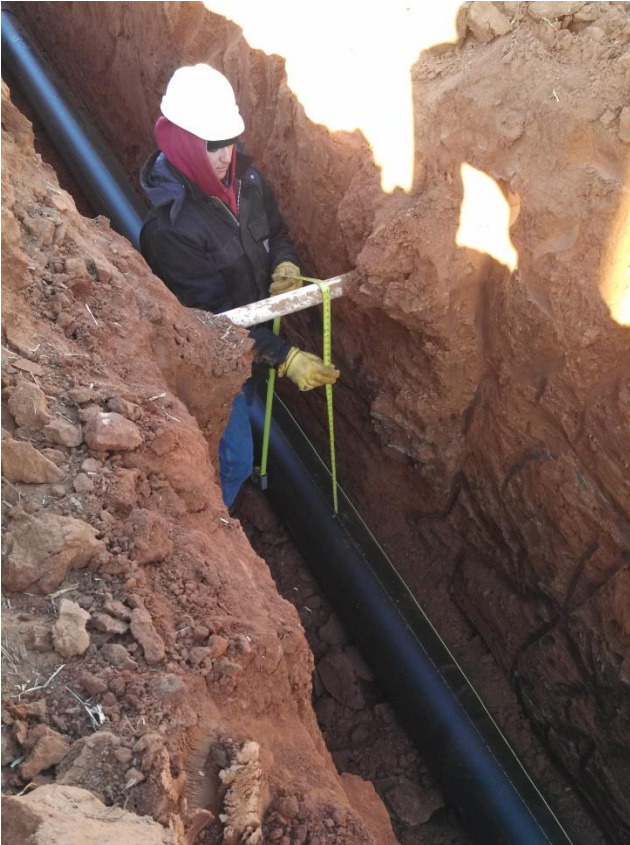
Pipeline data collection with GeoJot+



Increase safety

- Eliminate the need for inspectors to leave the worksite and drive to manually file reports
- Quickly find specific valves in the event of a leak

Pipeline data collection with GeoJot+



Simplify

- Train your inspectors in minutes – even remotely
- Reduce number of devices inspectors are bringing into the field
- Quickly transfer licenses between contractors, employees and devices
- Share information through reports, Google Earth maps, or ArcGIS layers

Proof of performance

- Identifying discrepancies between installation reports and actual pipe laid
- CompassData used GeoJot+ to document
- 455 problem in 360 miles of mainline and 3500 service lines & meters
- Problem areas located and delivered in customer's preferred .shp file format with pictures for proof.



Right of way and vegetation management

- Document issues
- Verify improvements



Exploration

- Planning the logistics of seismic survey activities

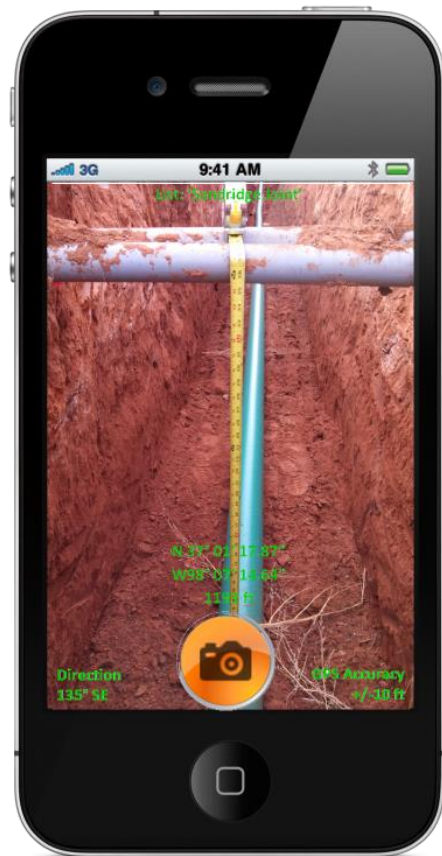


Disaster Response

- Creating a photo inventory of assets before and after event



As-built data collection



Attribute

Attribute Value

File Name	10-3-2013 12-09-08 PM_FLC_
Latitude	N 37.12460°
Longitude	W 98.01360°
Time Stamp	12:09:07 PM
Date Stamp	10/3/2013
POINT_TYPE	FLC_
FL_CONTRACTOR_EXPOSING	API
FL_MATERIAL	POLY
FL_COMMODITY	WATER
FL_DIAMETER	3
FL_INSPECTOR	
FL_FOREMAN	
LINE_CLEARANCE	27
PIPE_CONDITION	GOOD
DAMAGE_INCURRED	NONE
DATE_EXPOSED	10/3/2013
DATE_BACKFILLED	10/03/2013
COMMENTS	
DAMAGE_INCURRED	NONE
DATE_EXPOSED	10/3/2013
DATE_BACKFILLED	10/03/2013
COMMENTS	

And more.....

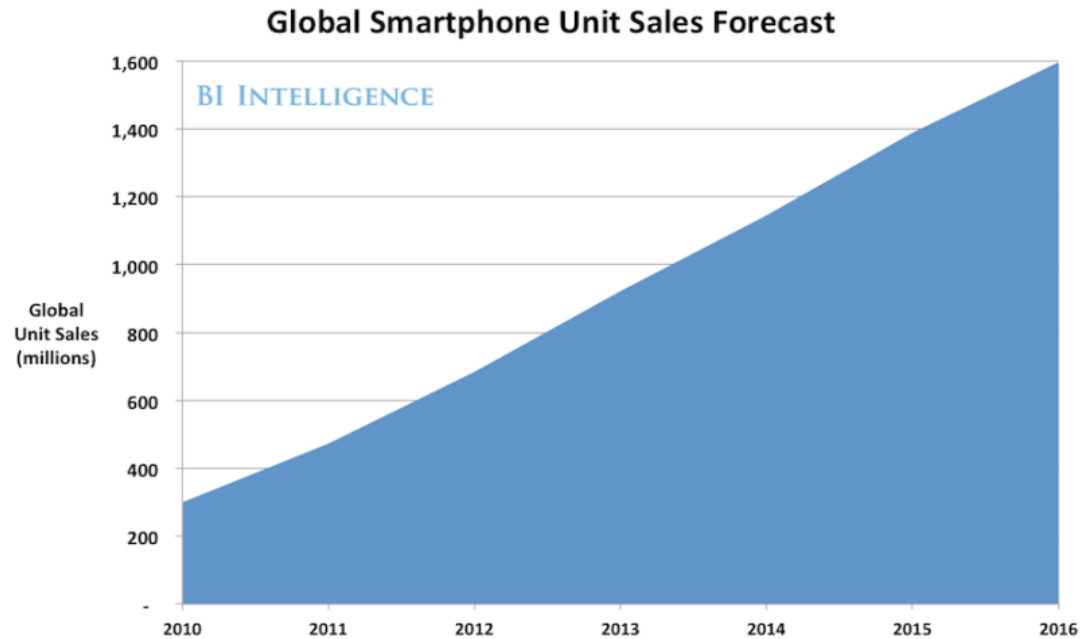
- Valve site inspections
- Asset audits
- Well head inspections
- Management of change



Eliminate paper forms and transcription



Embrace the future



Collect compliance data using:



- Android smartphones & tablets
- Apple iPhones & iPads
- Windows Mobile handheld GPS units

Easy as 1,2,3

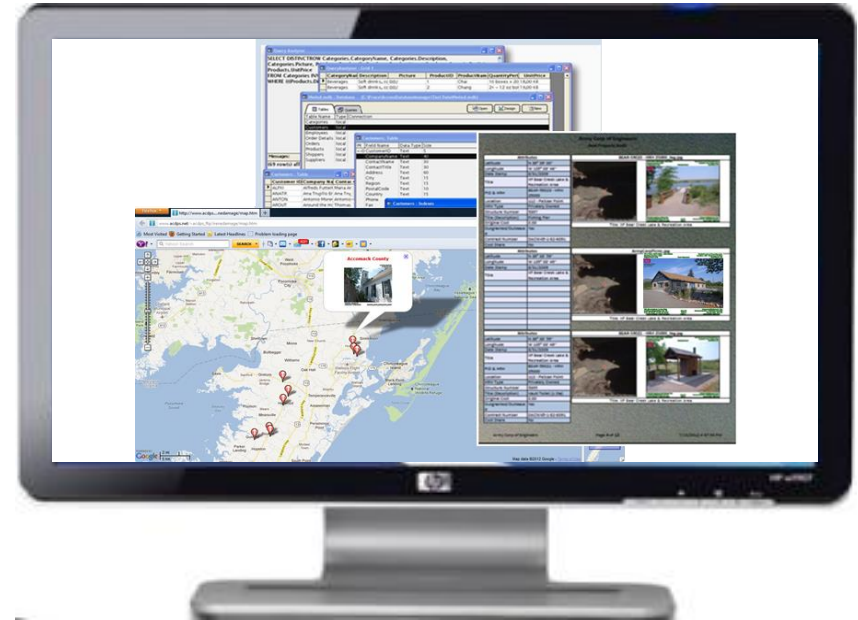
1



2



3



Easy to train, use, manage

- Train inspectors to use GeoJot+ in minutes
- Quickly and accurately collect data
- Data collection intuitively tied to photos
- Transfer licenses between users on any device



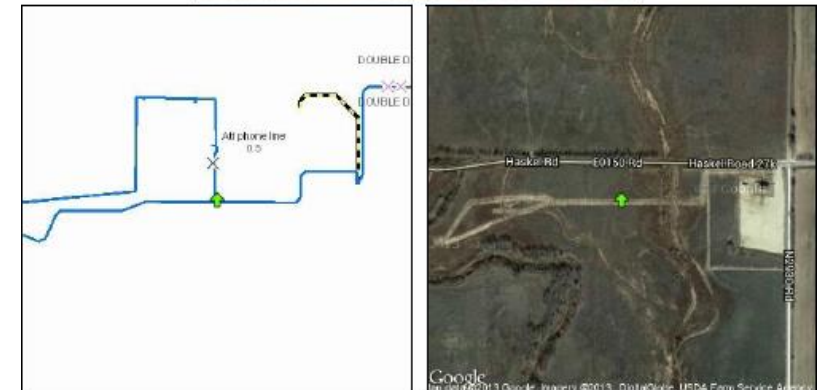
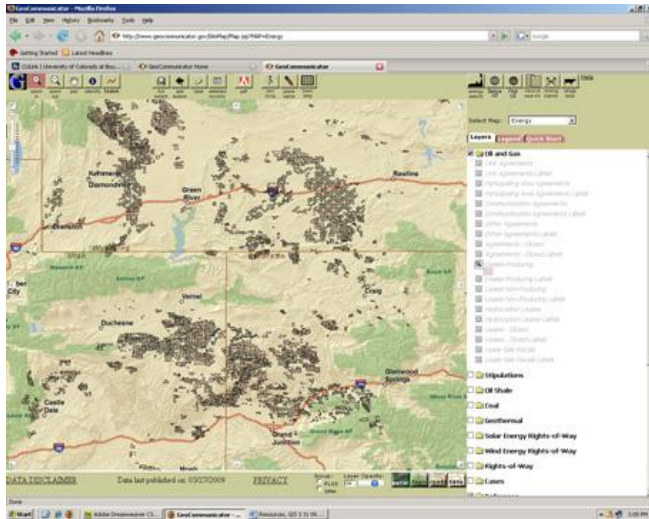
Transfer data via the cloud

- Automatic
- Specify WiFi only to avoid data overages
- Data is put into a queue in remote areas
- Rename and organize photos automatically



GeoJot+ output for:

- Esri ArcGIS
- Google Earth
- Oracle
- SQL Server
- PODs
- MS Access
- Custom reports
- Web output



Next Steps?

- Short live demo
- Contact us to try it on a project (extended full feature trial, training)
- Private webinar to discuss needs and any customization of the system

Contact information

Tyler McGarrity

Technical Account Manager

Phone: 303.255.2908

Email: Tyler.McGarrity@GeoSpatialExperts.com

www.GeoSpatialExperts.com

