

## South Boulder Peak Trail, Signage, and Structure Assessment

Trail Audit Team

May 8, 2011

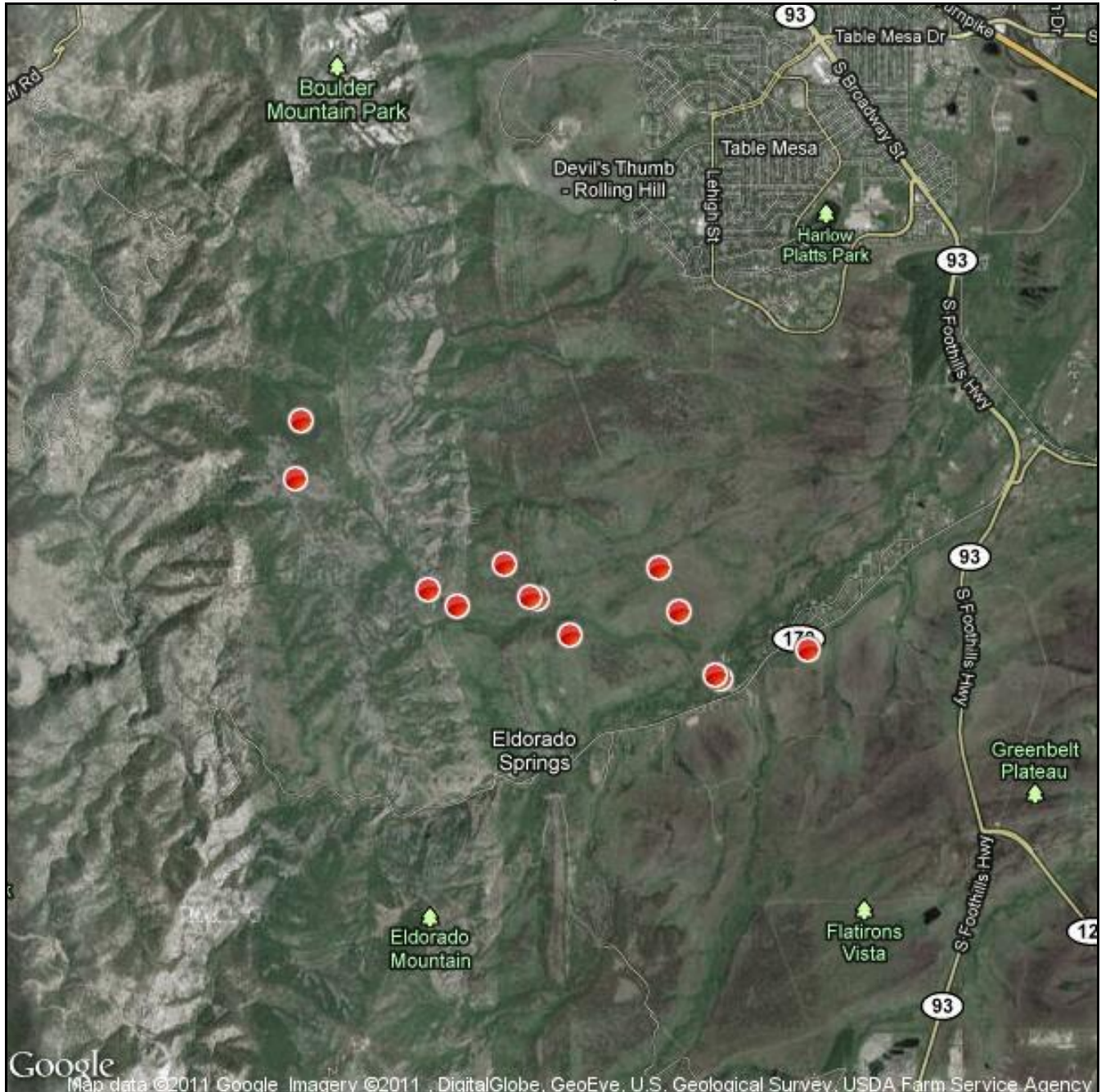
Round-Trip Length: 6.7 miles

Start - End Elevation: 5,645' - 8,549' (8,549' max elevation)

Homestead Trail bears right and continues on as the Shadow Canyon Trail.

GPS Coordinates - DATUM WGS84

### Overview Map



From the South Mesa Trailhead parking lot, cross over the footbridge and follow signs to the *Towhee Trail* (.1 mile) - bear left. The Towhee Trail rises gradually through open grassy slopes for .5 miles, then narrows into a thatch brush-lined gulley paralleled by a small stream.

The Towhee Trail merges with the *Homestead Trail* after 1.15 miles, bears right and continues on as the **Shadow Canyon Trail**. The Shadow Canyon Trail joins a fire road at 1.35 miles (6,275'); this is the first of three access points to the **Mesa Trail**. Turn left on the fire road and climb methodically over well-groomed terrain for .7 miles to the *last Mesa Trail access point*, and beginning of travel up Shadow Canyon (2.1 miles : 6,582').

Here the trail is considerably more strenuous, climbing 1,967' in just 1.25 miles to reach the summit. Lingering winter conditions will amplify this challenge. The trail twists and weaves tightly along a faintly marked path amid notably large boulders and old-growth ponderosa and lodgepole. Look for occasional signs posted on trees to the right of the trail for guidance. Though views are limited, the dark, boulder-laden forest itself is quite scenic and serene.

The grade eases upon reaching the **Shadow Canyon Trail - Bear Peak West Ridge Trail junction** (3 miles : 8,155'). Take note of young aspen groves on the saddle before turning left (south) for the last .35 miles to South Boulder Peak. The final 100 yards run up steep and loose scree; extra caution is necessary when snow, ice or strong winds are present. The summit is small and pointed, but the large boulders comprising it afford ample room for a handful of visitors to find small nooks with sensational panoramas.

**GPS Coordinates - DATUM WGS84**N39 56.326 W105 15.493 - South Mesa Trailhead

- N39 56.560 W105 15.906 - Traveling west on the Towhee Trail
- N39 56.763 W105 17.220 - 3rd Mesa Trail junction; begin travel up Shadow Canyon
- N39 56.847 W105 17.319 - Shadow Canyon 1
- N39 57.124 W105 17.606 - Shadow Canyon 2
- N39 57.404 W105 17.834 - Shadow Canyon - Bear Peak West Ridge junction (saddle)
- N39 57.281 W105 17.915 - Approach to summit
- N39 57.215 W105 17.967 - South Boulder Peak Summit

## Directions to Trailhead

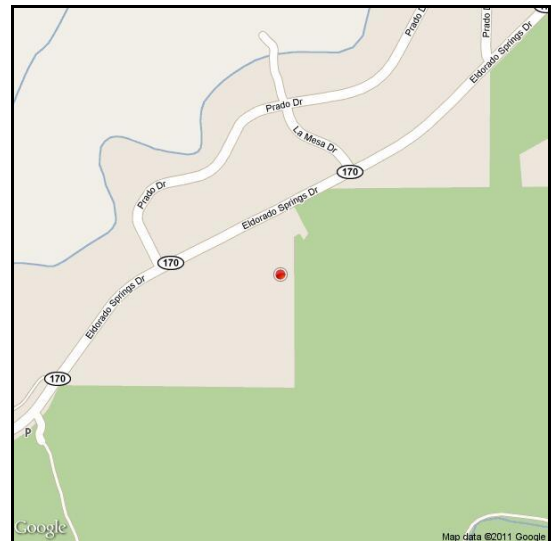
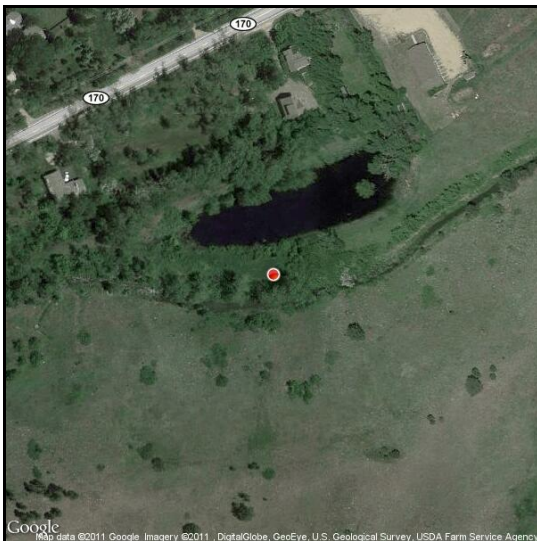
From Boulder, take Broadway South which will turn into HWY 93. Go for 2.6 miles on HWY 93 and take a right onto Eldorado Springs Drive / HWY 170. There will be a gas station at the corner. Follow Eldorado Springs Drive / HWY 170 for 1.8 miles towards Eldorado Canyon State Park and look for the parking area on the right hand side of the street.

## Contact Information

Boulder County Parks & Open Space  
5201 St. Vrain Road  
Longmont, Colorado 80503  
Phone: 303.678.6200  
Fax: 303.678.6180  
[www.co.boulder.co.us/openspace](http://www.co.boulder.co.us/openspace)

## South Boulder Peak Trail Survey

File Name: Assessment of trail, signage, and structure condition 5-8-2011.JPG

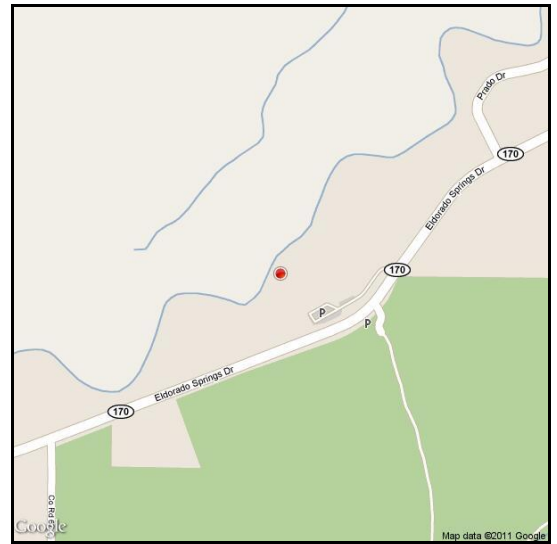
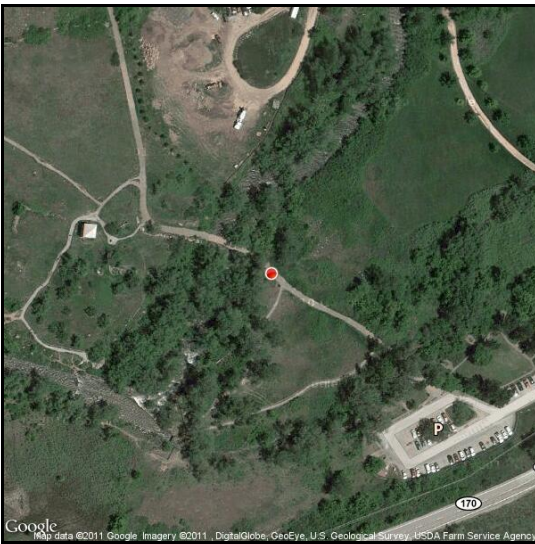


Attributes	
General Assesment	
Type	
Condition	
Comments	
Action Needed	
Title	South Boulder Peak Trail Survey
Elevation	
Latitude	N 39° 56' 29"
Longitude	W 105° 15' 04"
Date Stamp	5/8/2011



# South Boulder Peak Trail Survey

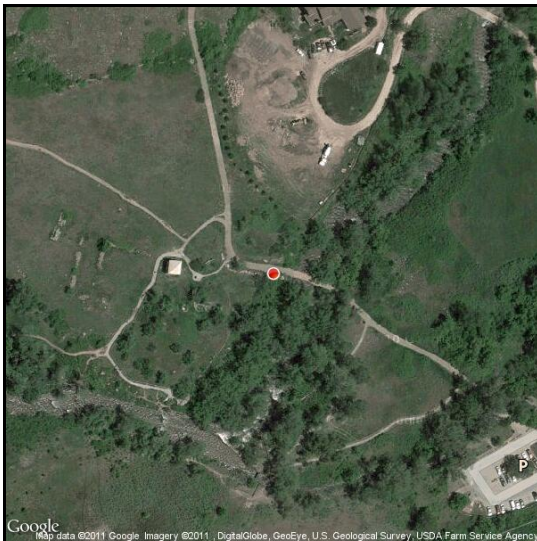
File Name: Assessment of trail, signage, and structure condition\_Handrail\_None\_5-8-2011.JPG



Attributes	
General Assesment	Nominal
Type	Handrail
Condition	Nominal
Comments	sturdy bridge
Action Needed	None
Title	South Boulder Peak Trail Survey
Elevation	5655 ft
Latitude	N 39° 56' 22"
Longitude	W 105° 15' 33"
Date Stamp	5/8/2011

# South Boulder Peak Trail Survey

File Name: Assessment of trail, signage, and structure condition\_Structure\_None\_5-8-2011[1].JPG

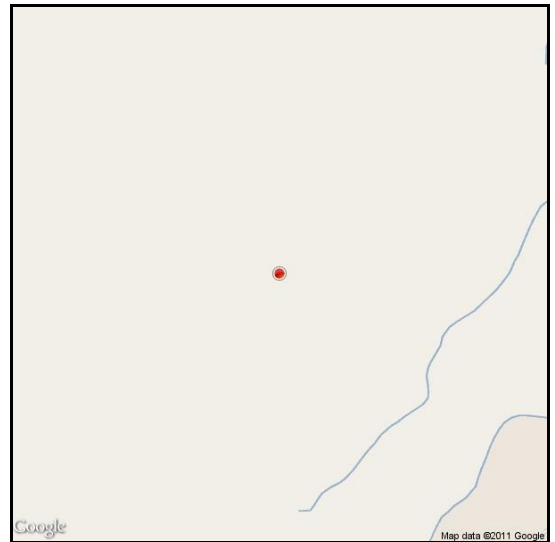
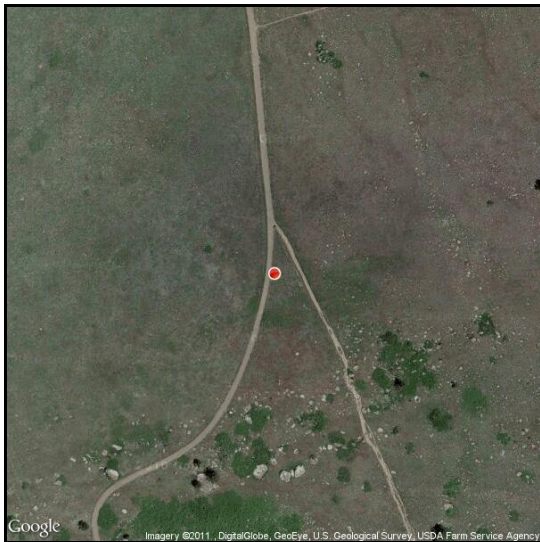


Attributes	
General Assesment	Nominal
Type	Structure
Condition	Well maintained
Comments	Homestead
Action Needed	None
Title	South Boulder Peak Trail Survey
Elevation	5659 ft
Latitude	N 39° 56' 22"
Longitude	W 105° 15' 35"
Date Stamp	5/8/2011



# South Boulder Peak Trail Survey

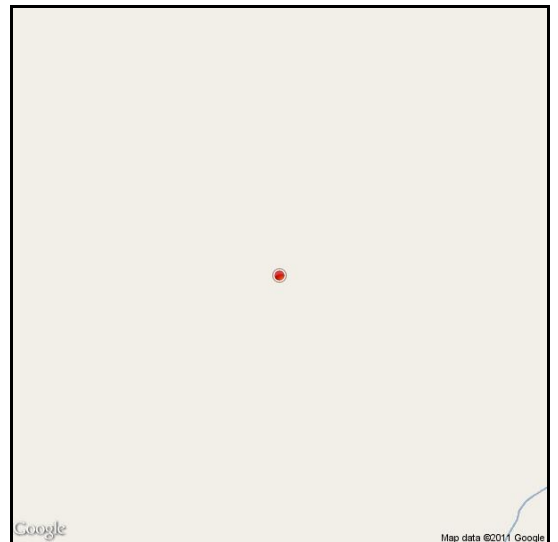
File Name: Assessment of trail, signage, and structure condition\_Sign, Map\_New sign\_5-8-2011.JPG



Attributes	
General Assesment	Gravel / Scree
Type	Sign, Map
Condition	Well maintained
Comments	NA
Action Needed	New sign
Title	South Boulder Peak Trail Survey
Elevation	5836 ft
Latitude	N 39° 56' 39"
Longitude	W 105° 15' 47"
Date Stamp	5/8/2011

### South Boulder Peak Trail Survey

File Name: Assessment of trail, signage, and structure condition\_Sceanic\_New sign\_5-8-2011.JPG

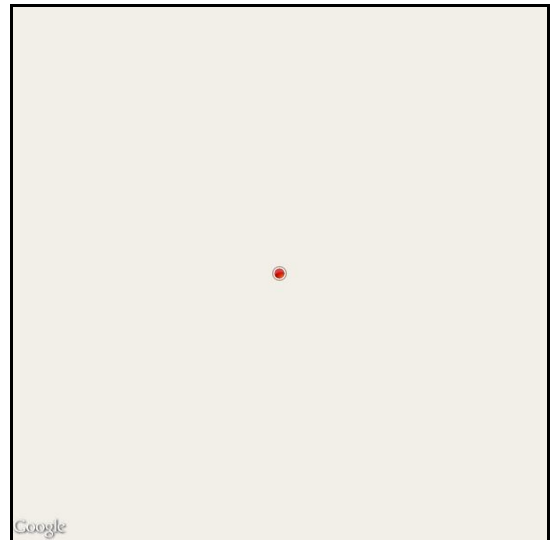
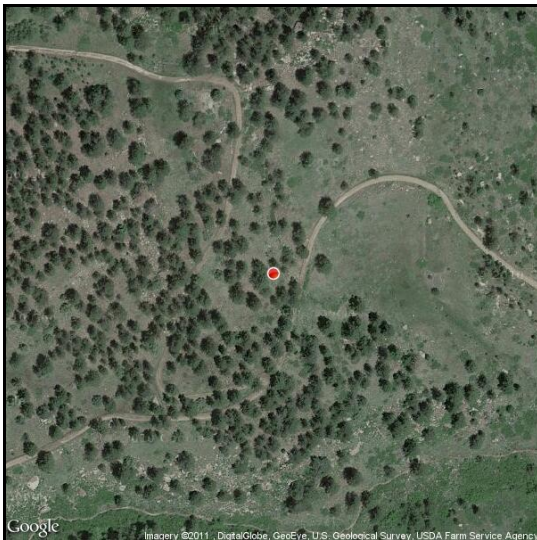


Attributes	
General Assesment	Gravel / Scree
Type	Sceanic
Condition	Well maintained
Comments	view of S Boulder Peak
Action Needed	New sign
Title	South Boulder Peak Trail Survey
Elevation	5888 ft
Latitude	N 39° 56' 50"
Longitude	W 105° 15' 54"
Date Stamp	5/8/2011



## South Boulder Peak Trail Survey

File Name: Assessment of trail, signage, and structure condition\_Sign\_None\_5-8-2011[1].JPG

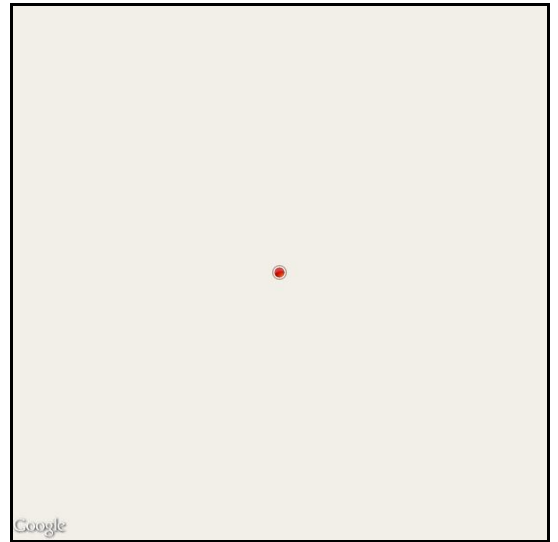
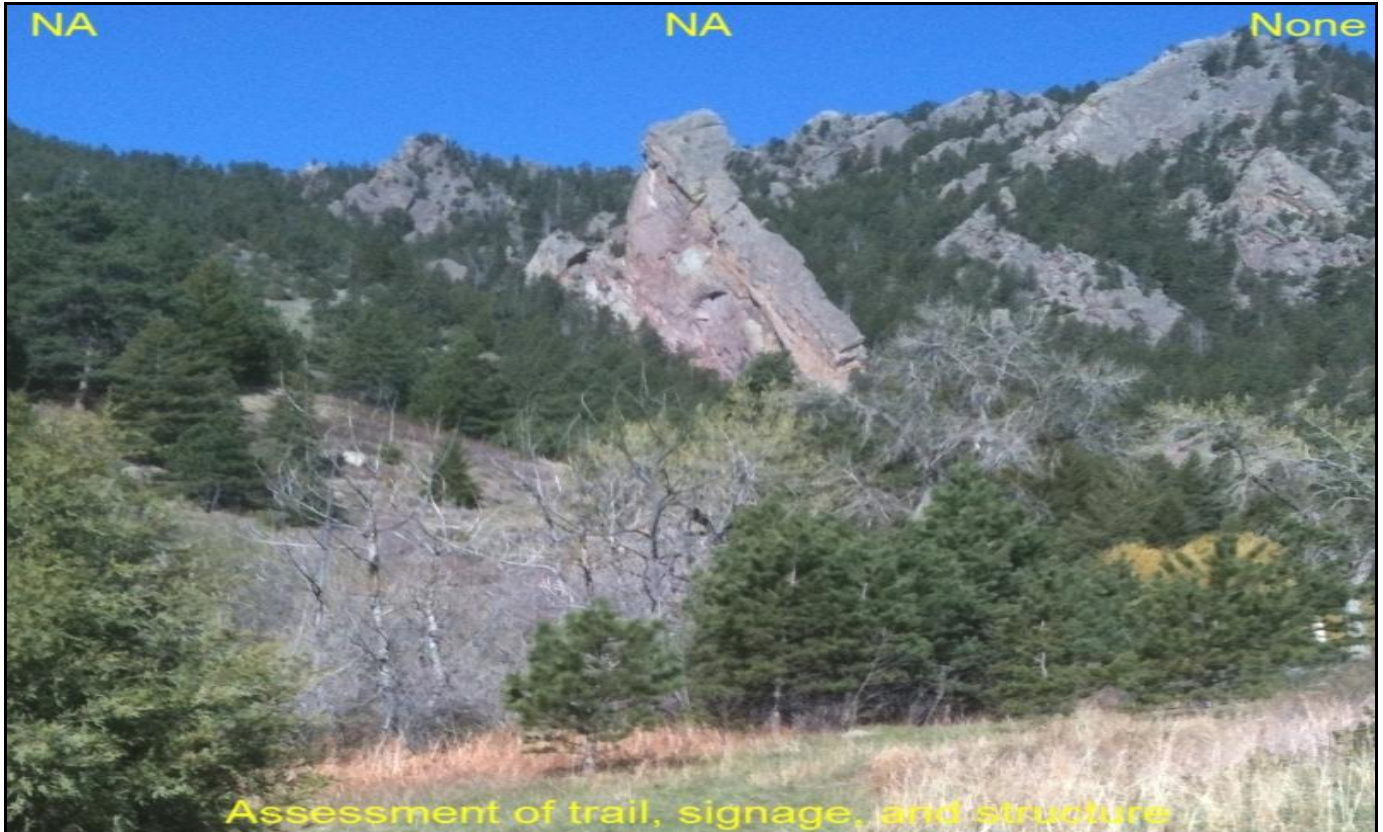


Attributes	
General Assesment	Gravel / Scree
Type	Sign
Condition	Well maintained
Comments	Needs repair
Action Needed	None
Title	South Boulder Peak Trail Survey
Elevation	6082 ft
Latitude	N 39° 56' 42"
Longitude	W 105° 16' 36"
Date Stamp	5/8/2011



### South Boulder Peak Trail Survey

File Name: Assessment of trail, signage, and structure condition\_NA\_None\_5-8-2011.JPG

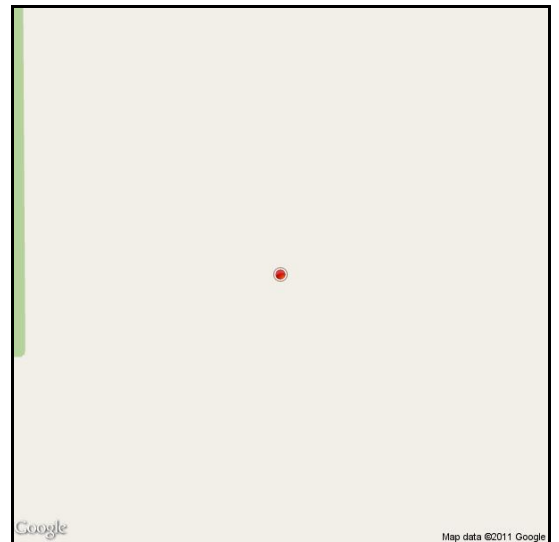


Attributes	
General Assesment	NA
Type	NA
Condition	NA
Comments	Needs repair
Action Needed	None
Title	South Boulder Peak Trail Survey
Elevation	5468 ft
Latitude	N 39° 56' 43"
Longitude	W 105° 16' 38"
Date Stamp	5/8/2011



# South Boulder Peak Trail Survey

File Name: Assessment of trail, signage, and structure\_Sign\_None\_5-8-2011[2].JPG

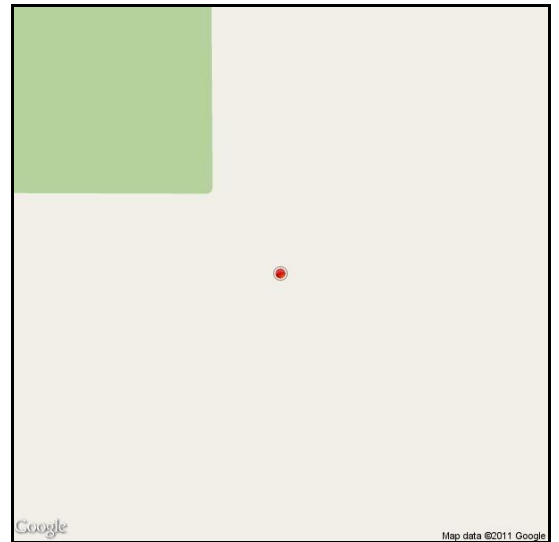
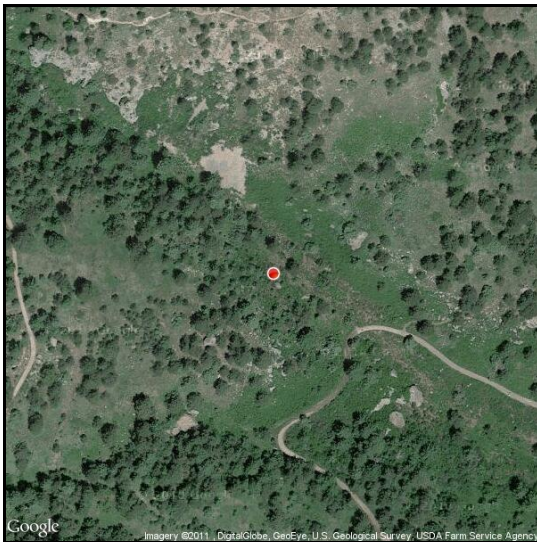


Attributes	
General Assesment	NA
Type	Sign
Condition	Disrepair
Comments	NA
Action Needed	None
Title	South Boulder Peak Trail Survey
Elevation	1718 ft
Latitude	N 39° 56' 51"
Longitude	W 105° 16' 47"
Date Stamp	5/8/2011



### South Boulder Peak Trail Survey

File Name: Assessment of trail, signage, and structure condition\_Sign\_None\_5-8-2011[3].JPG

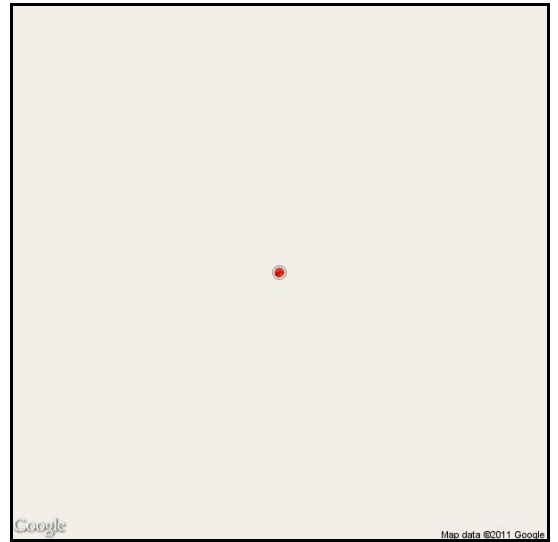


Attributes	
General Assesment	NA
Type	Sign
Condition	Nominal
Comments	NA
Action Needed	None
Title	South Boulder Peak Trail Survey
Elevation	6059 ft
Latitude	N 39° 56' 40"
Longitude	W 105° 17' 04"
Date Stamp	5/8/2011



### South Boulder Peak Trail Survey

File Name: Assessment of trail, signage, and structure condition\_Structure\_Repair\_5-8-2011.JPG

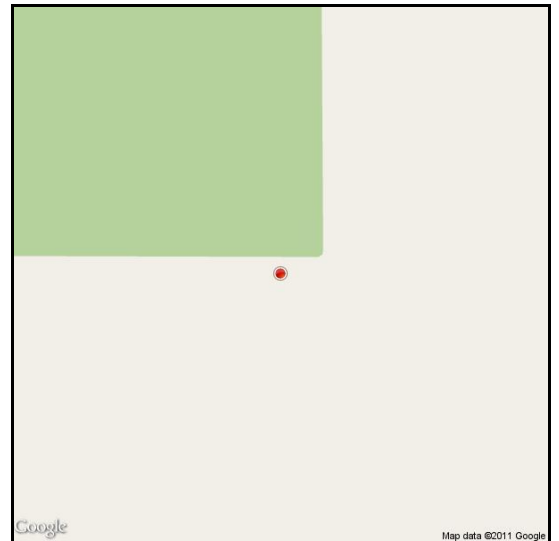


Attributes	
General Assesment	NA
Type	Structure
Condition	Disrepair
Comments	NA
Action Needed	Repair
Title	South Boulder Peak Trail Survey
Elevation	
Latitude	N 39° 56' 33"
Longitude	W 105° 16' 24"
Date Stamp	5/8/2011



# South Boulder Peak Trail Survey

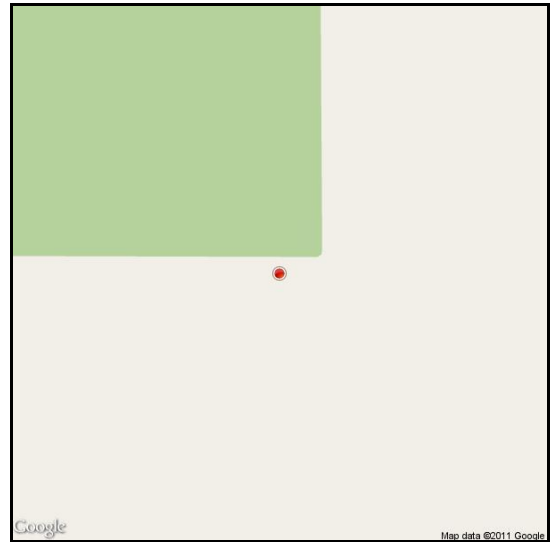
File Name: Assessment of trail, signage, and structure condition\_Map\_Repair\_5-8-2011.JPG



Attributes	
General Assesment	NA
Type	Map
Condition	Disrepair
Comments	NA
Action Needed	Repair
Title	South Boulder Peak Trail Survey
Elevation	6449 ft
Latitude	N 39° 56' 44"
Longitude	W 105° 17' 13"
Date Stamp	5/8/2011

### South Boulder Peak Trail Survey

File Name: Assessment of trail, signage, and structure\_Handrails\_Repair\_5-8-2011.JPG



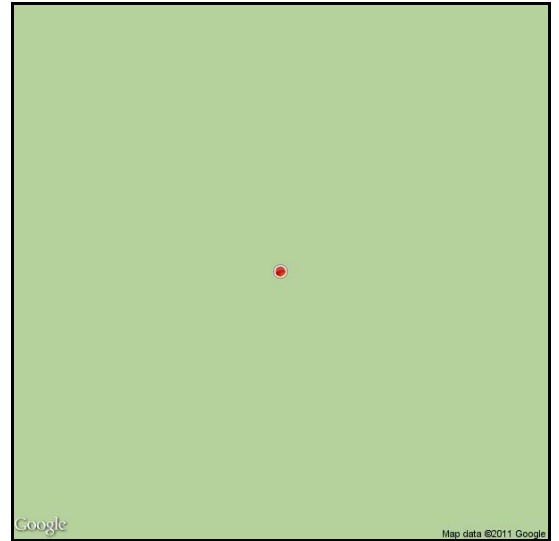
#### Attributes

Attributes	
General Assesment	Conditioning Needed
Type	Handrails
Condition	Disrepair
Comments	NA
Action Needed	Repair
Title	South Boulder Peak Trail Survey
Elevation	6449 ft
Latitude	N 39° 56' 44"
Longitude	W 105° 17' 13"
Date Stamp	5/8/2011



## South Boulder Peak Trail Survey

File Name: Assessment of trail, signage, and structure condition\_Sign, Map\_Repair\_5-8-2011.JPG

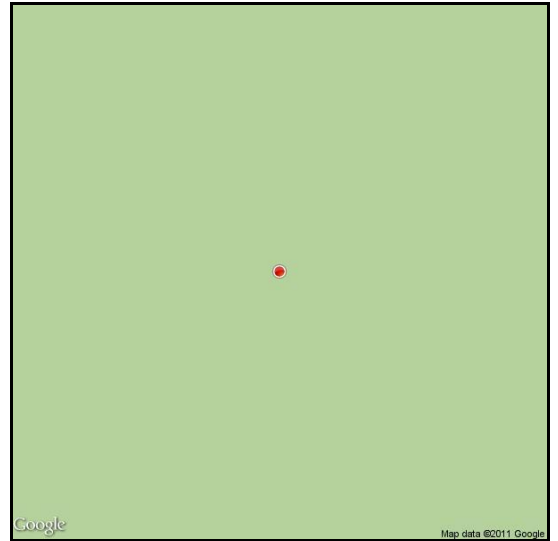
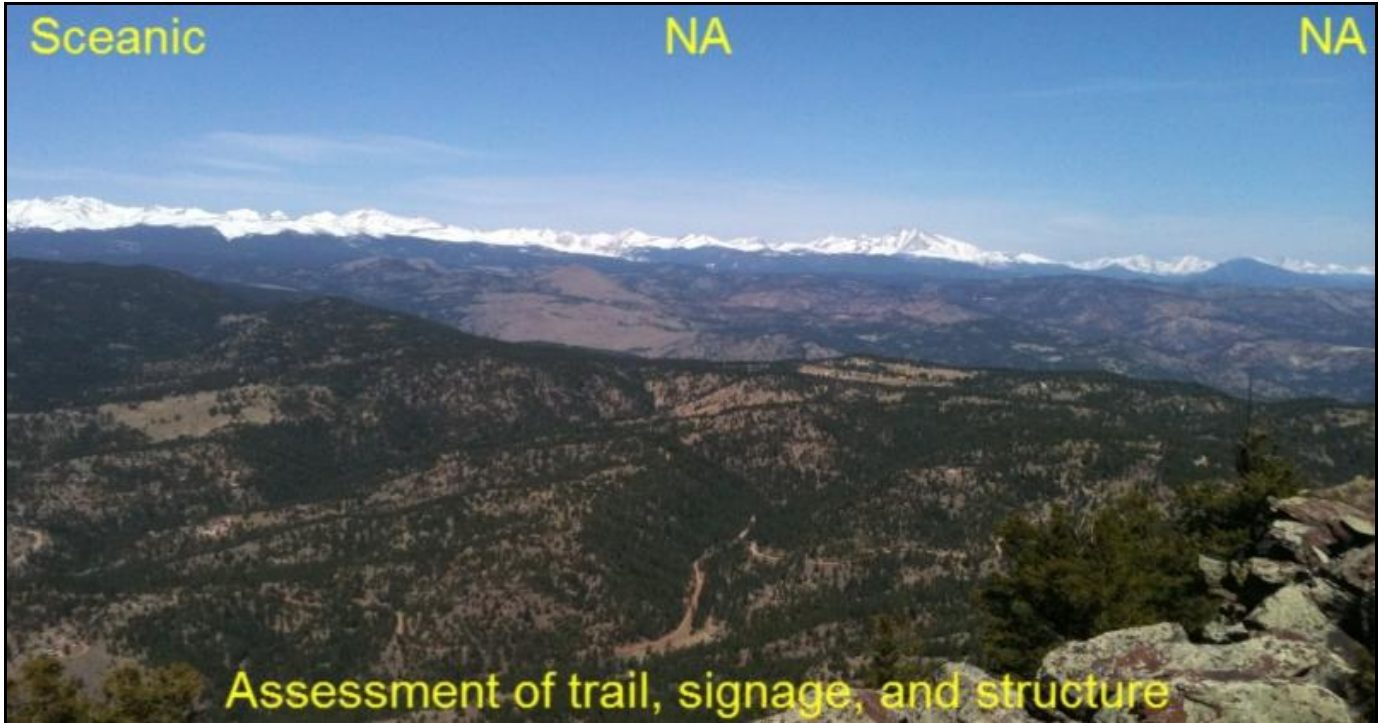


### Attributes

General Assesment	Conditioning Needed
Type	Sign, Map
Condition	Disrepair
Comments	NA
Action Needed	Repair
Title	South Boulder Peak Trail Survey
Elevation	2680 ft
Latitude	N 39° 57' 29"
Longitude	W 105° 17' 56"
Date Stamp	5/8/2011

## South Boulder Peak Trail Survey

File Name: Assessment of trail, signage, and structure condition\_Sceanic\_NA\_5-8-2011.JPG



Attributes	
General Assesment	NA
Type	Sceanic
Condition	NA
Comments	NA
Action Needed	NA
Title	South Boulder Peak Trail Survey
Elevation	8480 ft
Latitude	N 39° 57' 14"
Longitude	W 105° 17' 58"
Date Stamp	5/8/2011