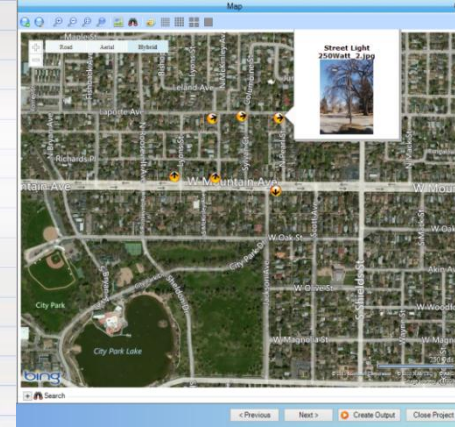
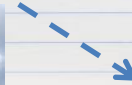
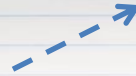


Field Data Collection With Smartphones, Tablets and Lasers



Laser Technology & GeoSpatial Experts Partnership



Leader in Photo-based Data Collection

United States Army Corps of Engineers • AECOM • United States Army • **Golder Associates** • United States Marine Corp • Raytheon • United States Air Force • United States Navy • National Park Service • Georgia Department of Transportation • Texas Department of Transportation • Minnesota Department of Transportation • Florida Department of Transportation • State of Alaska • State of Louisiana • State of Nevada • State of Rhode Island • State of Tennessee • New York State Department of Environmental Conservation Atlanta Regional Commission • Rhode Island Natural History Survey • Big Cypress National Preserve • **FEMA** • Bureau of Land Management • Smithsonian Institution • American Museum of Natural History • Australia Department of Defense • Canadian Armed Forces • Department of Defense • Parks Canada • Rocky Mountain National Park • Dinosaur National Monument • The Nature Conservancy • Department of State • **United States Coast Guard** • USDA • Federal Highway Administration • Glacier National Park • USGS • United States Fish and Wildlife Service • United States Forest Service • Australia Department of Environment and Heritage • Government of the Northwest Territories • British Embassy • Ontario Ministry of Natural Resources • State of Qatar • Tasmania Department of Tourism • Geoscience Australia • County of Orange, CA • Jefferson County, OH • City of Bryan, TX • City of College Station, TX • City of Charlotte, NC • City of Long Beach, CA • City and County of San Francisco, CA • City of Kissimmee, FL • Lake County Stormwater • Collier County, FL • Miami-Dade County, FL • City of Tucson, AZ • Quinault Indian Nation • Florida Fish and Wildlife Conservation Commission • Los Angeles County Fire Department • Manitoba Hydro • Nueces River Authority • Honolulu Board of Water Supply • Missoula County Weed District • Rhode Island Natural History Survey • Office of the Chief Medical Examiner, New York City • Calhoun County Emergency Management Association • Washington DC Department of Health • Appalachian National Scenic Trail • Cape Hatteras National Seashore • Ducks Unlimited • National Marine Fishery Service • **Northrop Grumman** • AirPhoto USA • Ayres Associates • Bechtel • Brown and Caldwell • Ecological Resource Consultants • EMA, Inc. • EZ Storage • Fisher Associates • FMSM Engineers, Inc. • General Dynamics AIS • HNTB Corporation • Inwood Consulting Engineers • Johnson Engineering • LD Bradley Land Surveyors • Duke Energy • Louis Berger Group • Mesa Associates • NGA • Northstart Geomatics • Osmose Utility Services • Pacific International Engineering • Parsons Brinkerhoff • PBS & J • PixEarth • Reiss Environmental • Smart Map Imaging • Respec • TechTrans • The Titan Corporation • Transpotek Engineers • Vantage Point Photography • Walt Disney Imagineering • XPM Technologies • Carter & Burgess • Golder Associates – Jakarta • Earthquake Engineering Research Institute • **Oil Spill Response, Ltd.** • Bishop Museum • Pole Maintenance Company • Spokane Appraisal Services, Inc. • Auburn University • Tufts University • University of Louisiana • Community College of Baltimore • University of New Orleans • East Carolina University • University of New Mexico • Oregon State University • University of Alaska • Massachusetts Institute of Technology





LASER TECHNOLOGY



 **LASER^{TECH} TECHNOLOGY**
Authorized Dealer

 **esri** Authorized
Business Partner

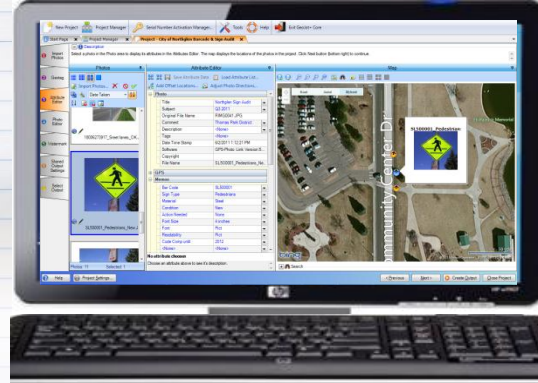
GeoJot+ and TruPulse System



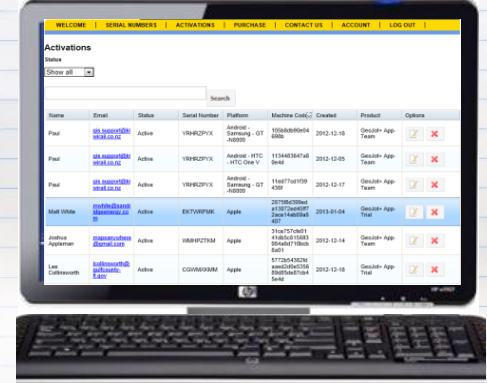
1. GeoJot+ App



2. Cloud



3. GeoJot+ Core



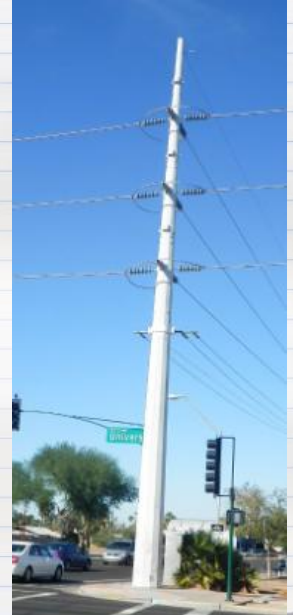
4. GeoJot+ Administrator's Dashboard

1. Use Android and Apple smartphones & TruPulse to quickly capture field data with geotagged photos
2. Automatically transfer photos & data to the office via the cloud
3. Process data back in the office creating reports, maps and database input
4. Manage teams: add, revoke, and transfer app licenses between Apple and Android devices

GeoJot+ TruPulse Applications



- Pole audits
- Asset location & condition
- Joint use line spacing
- Bridge surveys
- Disaster response
- Environmental surveys & modeling
- Forestry
- Insurance
- Proof of Performance
- Compliance Monitoring
- And



Wireless data transfer to Android app



Laser Technology 101



To a reflector

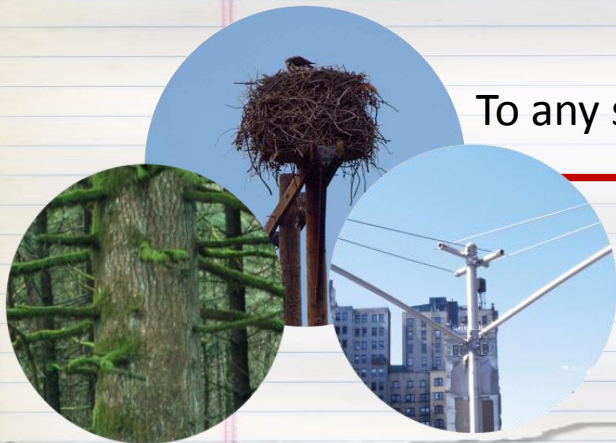
Phase Laser



To any surface

Pulse Laser

(a.k.a reflectorless)



TruPulse® Differentiators

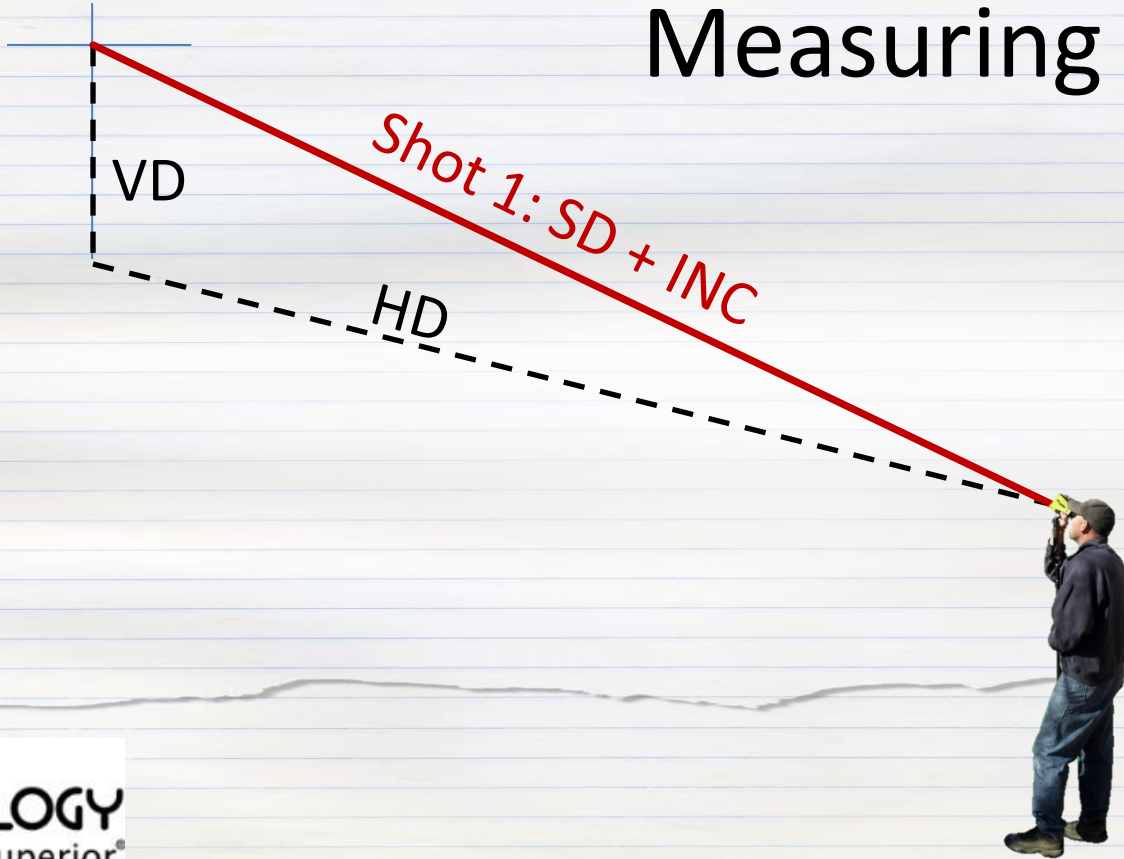


Fully Integrated Range + Tilt + 3D Compass

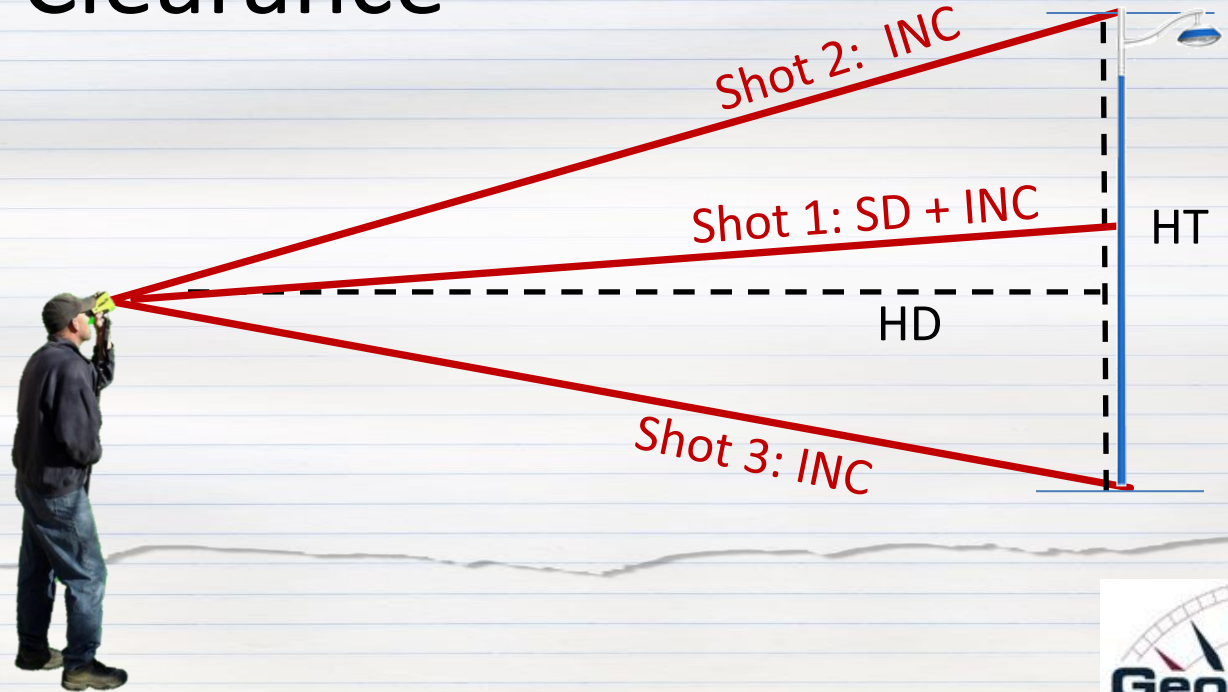


The only all-in-one laser compass with no pitch & roll limitations!

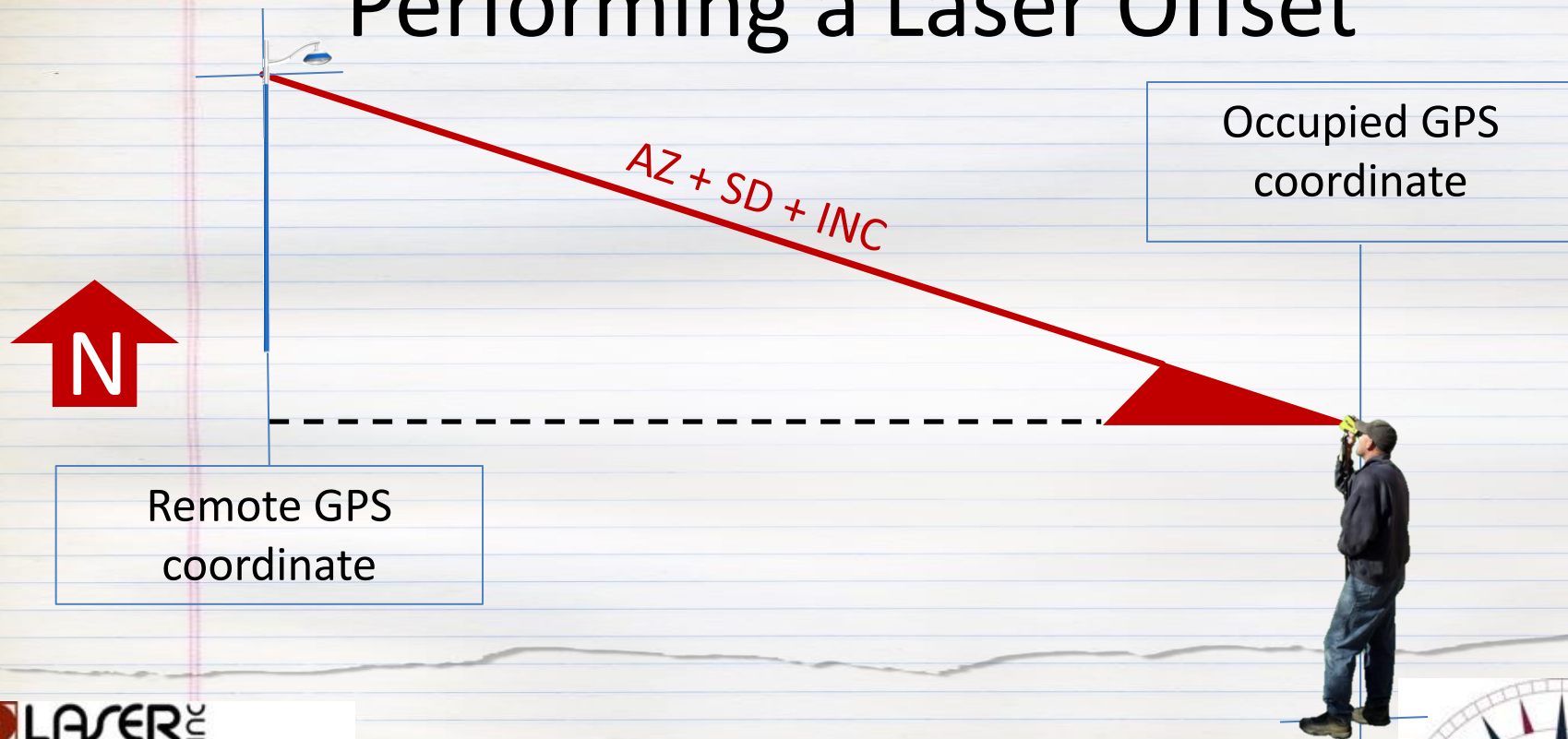
Measuring a Distance



Measuring a Height or Clearance

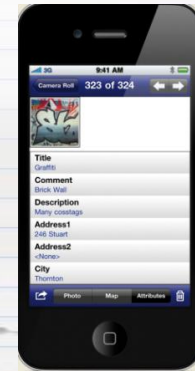


Performing a Laser Offset



GeoJot+ System Capabilities

1. Distance and Azimuth measurement (TruPulse)
2. Height (TruPulse)
3. Photographs
4. Attributes
5. Cloud-based data transfer
6. Data QA/QC
7. Offset locations
8. Mapped locations and reports
9. Input for databases & mapping systems
10. Barcode capture
11. Mobiles Teams



Photos, Attributes, Distance

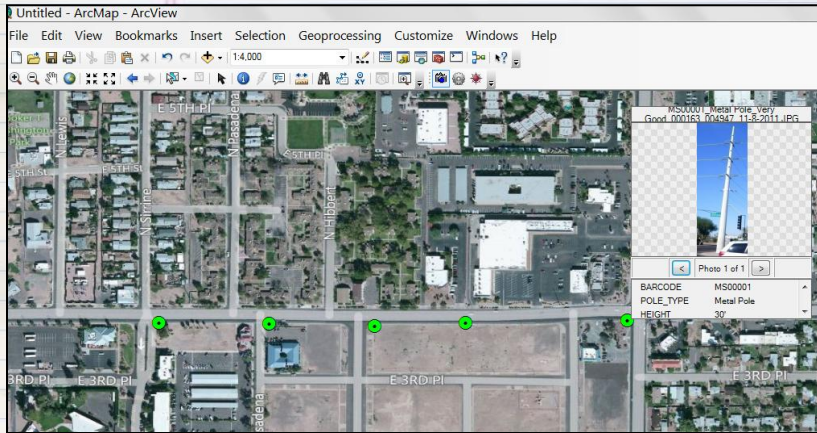


Facility Identifier	Northglenn City Assets Dept.
Attachment ID	NG - SL847-A
Light Type	Rectilinear
Bulb Type	250 Watts Metal Halide
Height	24' 10"
Install Date	06/10/2003
Condition	Repair arm
Owned By	City of Northglenn
Managed By	Fleet City Services
Rotation	True Compass direction
Last Update Date	09/03/2003
Last Editor	John Smith

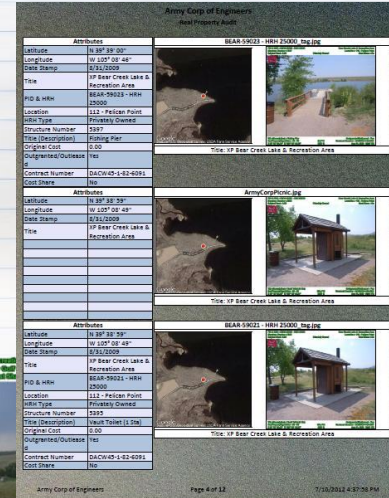


Output to Meet Every Need

- Google Earth Files
- ArcGIS Shapefiles & Geodatabases



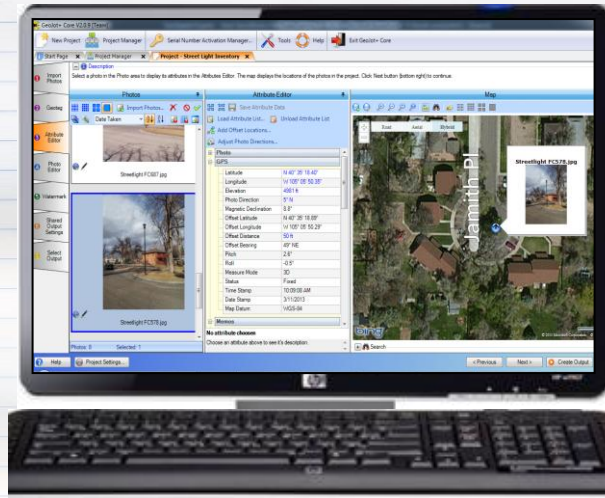
- Client Reports
- Watermarked Photos
- Database Input
- Webpages



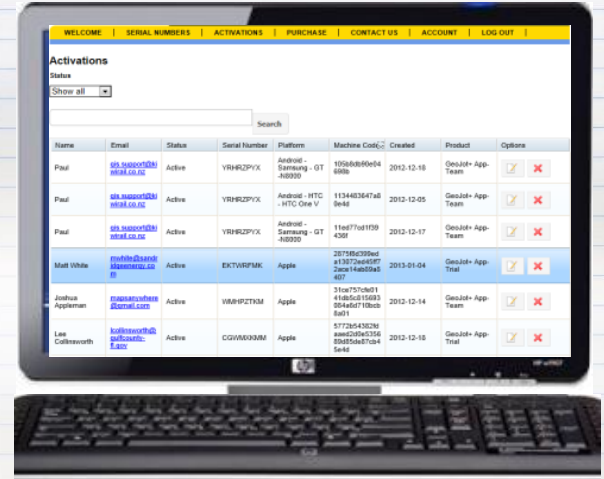
From field data collection..... to final reports



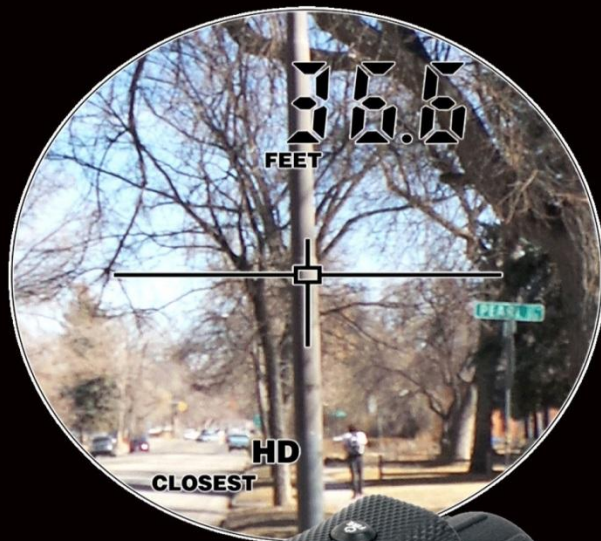
GeoJot+ App

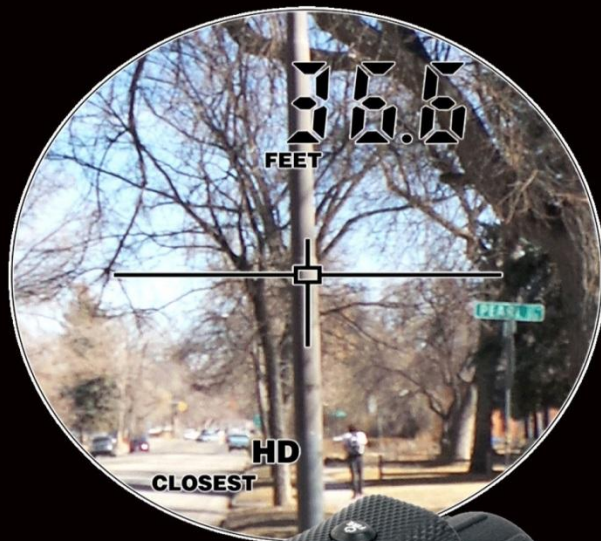


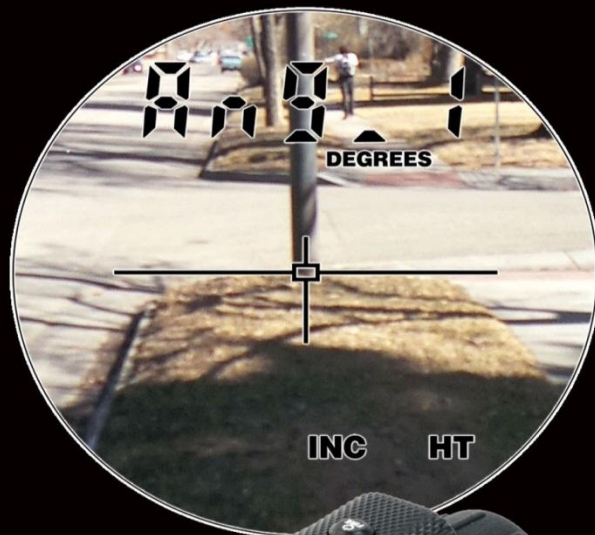
GeoJot+ Core



Administrator's Dashboard











Time, Money, and Competitive Advantage

- Increase revenue opportunities
- Increase efficiency
- Control expenses
- Increase worker safety
- Deliver more value to end-users
- Improve professional image with client



GeoJot+ TruPulse Checklist

- ✓ Offset position
- ✓ Photos
- ✓ Attribute collection
- ✓ Height
- ✓ 3 to 5 meter accuracy
- ✓ Intuitive for non-GIS pros
- ✓ Optimized for teams
- ✓ Cloud transfer
- ✓ Output for every need
- ✓ Barcode collection
- ✓ BYOD - budget friendly

GeoJot+ and TruPulse Common Resellers

